



**SIDE ELEVATION - EAST**

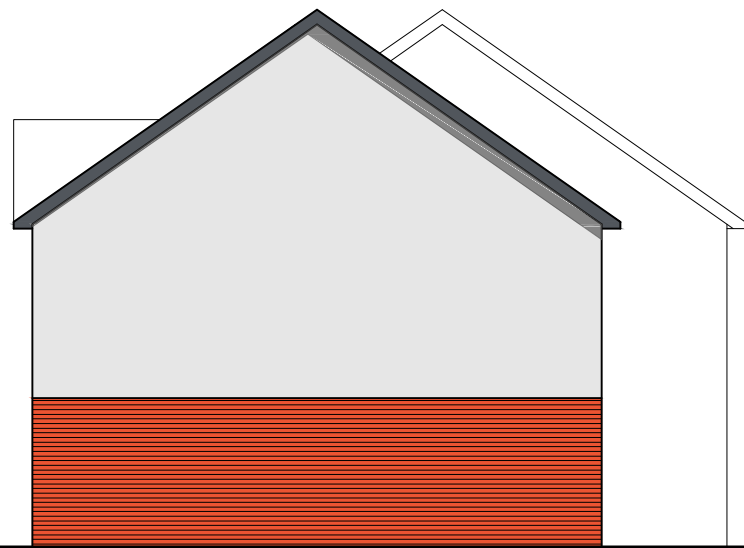
- Interlocking concrete roof tiles  
Colour: Dark grey
- Stained timber fascia  
Colour: Dark grey
- Pre-finished insulated render  
Colour: Off-white
- Polyester powder coated aluminium/timber composite double glazed windows  
Colour: Dark grey
- Facing brickwork  
Colour: Red stock

- Painted timber front door with vision panels  
Colour: Various primary colours
- Bike stores, bin stores and canopies  
Western Red Cedar on galvanised steel frame



**FRONT ELEVATION - NORTH**

- Polyester powder coated aluminium/timber composite double glazed curtain walling and entrance doors  
Colour: Dark grey



**SIDE ELEVATION - WEST**

- South facing roof to have interlocking PV tiles to match module of roof tiles  
Colour: Dark grey
- Balcony:  
Timber decking on galvanised steel frame  
Stainless steel handrails on glass balustrading
- Polyester powder coated aluminium/timber composite double glazed sliding/folding patio doors  
Colour: Dark grey



**REAR ELEVATION - SOUTH**

Revisions

Job Title  
**PROPOSED RESIDENTIAL DEVELOPMENT**

Location  
**NORTON ROAD  
WOKINGHAM**

Drawing Title  
**BLOCK A - FLATS  
ELEVATIONS**

Date 05/06/15 Drawn

Scale 1:125 at A3 Checked

ALL DIMENSIONS TO BE CHECKED ON SITE. DO NOT SCALE  
COPYRIGHT & INTELLECTUAL PROPERTY RIGHTS REMAIN WITH LANGLEY HALL ASSOCIATES LTD

**LHA** Royal Station Court, Twyford  
Reading, Berkshire, RG10 9NF  
Tel: 0118 932 0980 Fax: 0118 932 0981  
e-mail: architecture@lha.co.uk

Dwg no. **3765-PL-111** Revision

This page is intentionally left blank