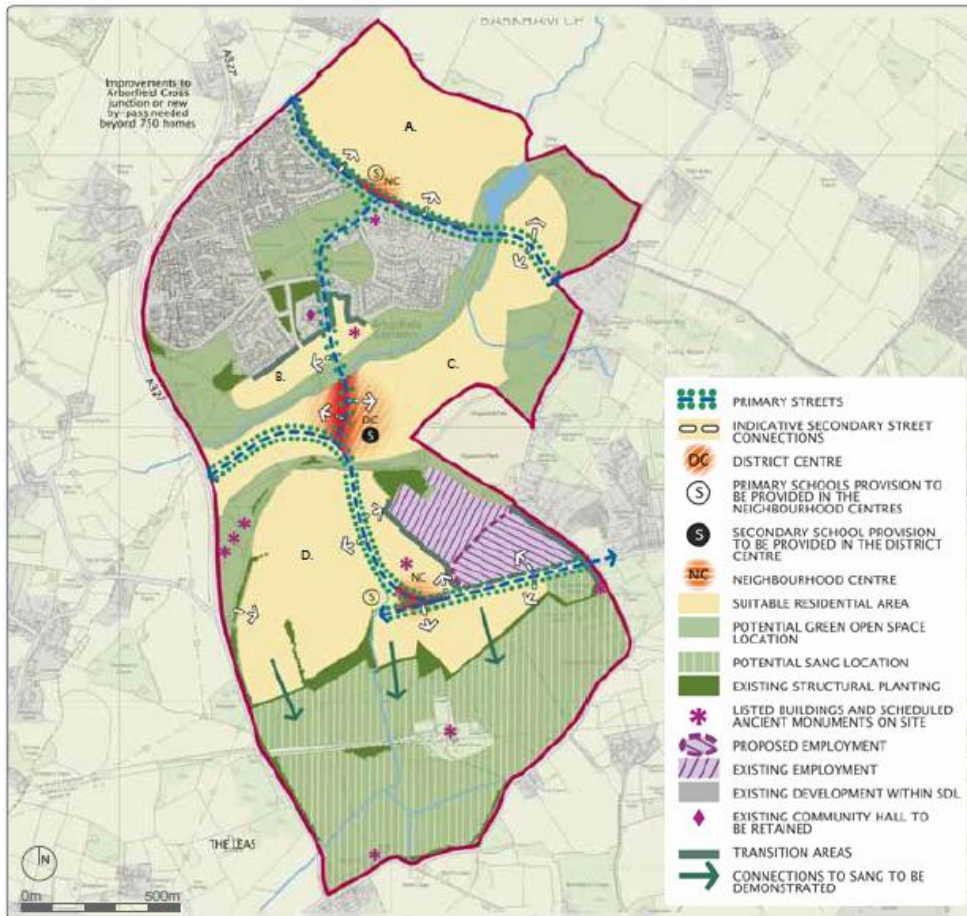


Appendix C

Preferred Spatial Framework Plan (Source: WBC: Adopted Arborfield Garrison SDL Supplementary Planning Documents: Figure 3.1)

96



	Approximate Indicative area (ha)	Indicative dwelling capacity (dwellings)
Area A	35	1,050
<i>Includes Neighbourhood Centre and a primary school</i>		
Area B	7	190
Area C	39	720
<i>Includes District Centre and Secondary School</i>		
Area D	56	1,540
<i>Includes Neighbourhood Centre and a primary school</i>		
		3,500

Notes

1. SDL to be planned according to guideline figure of 3,500 dwellings up to 2026
2. Land for Schools assumed as up to 10 ha. for Secondary School and 2.5 ha. for each Primary School.
3. Land for each centre assumed to be up to 6 hectares for the District Centre and up to 1.5 ha for each Neighbourhood Centre.
4. Areas A-D indicate areas for development and do not refer to development phasing.
5. In order to protect the existing mature trees a detailed tree survey of the site should be undertaken to inform the masterplan.
6. Particular regard should be had to pedestrian and cycle connectivity between the neighbourhoods, the SANG to the South, and surrounding areas.

Figure 3.1: Preferred Spatial Framework Plan (exact development areas to be agreed through ongoing discussions with LPA)

This page is intentionally left blank