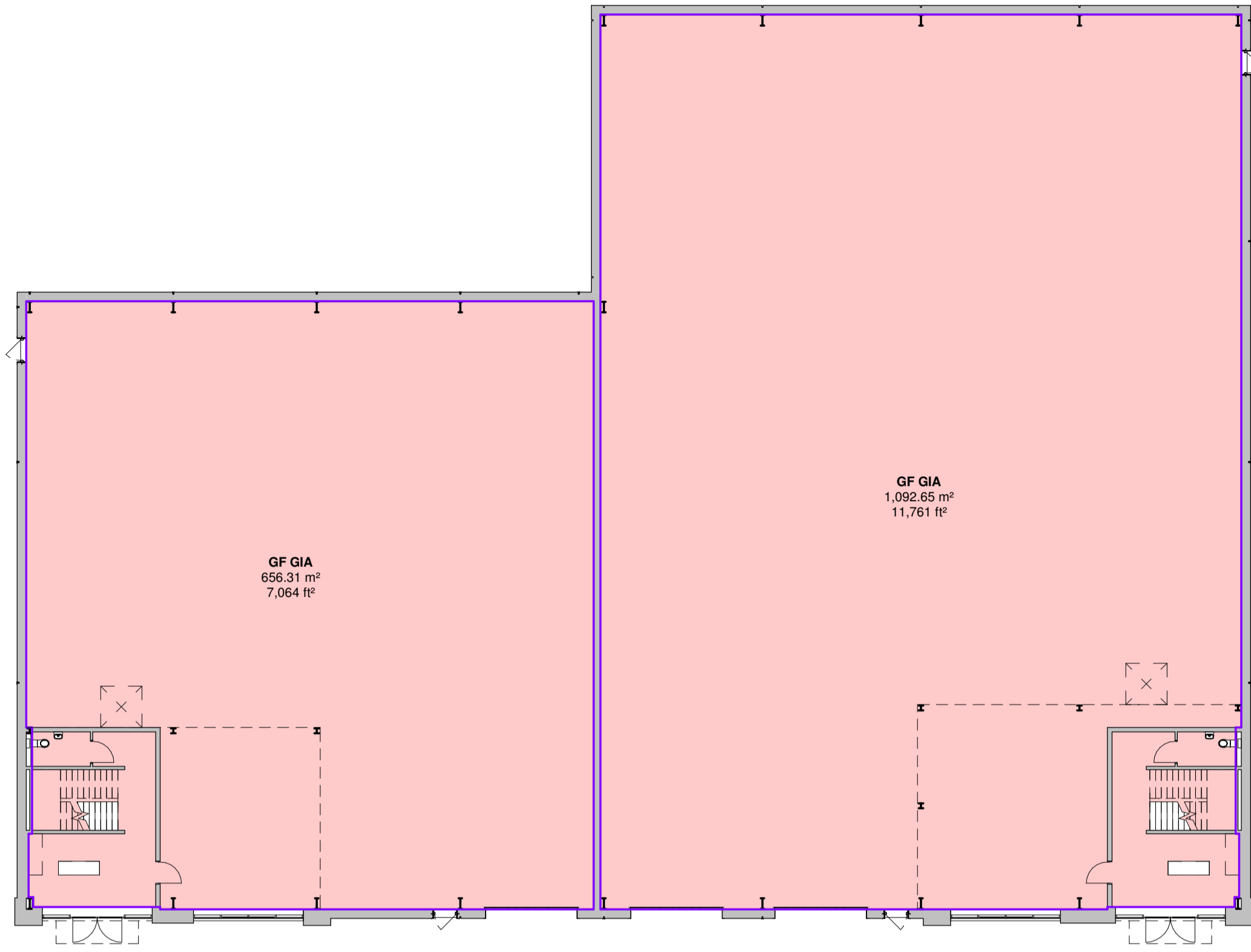
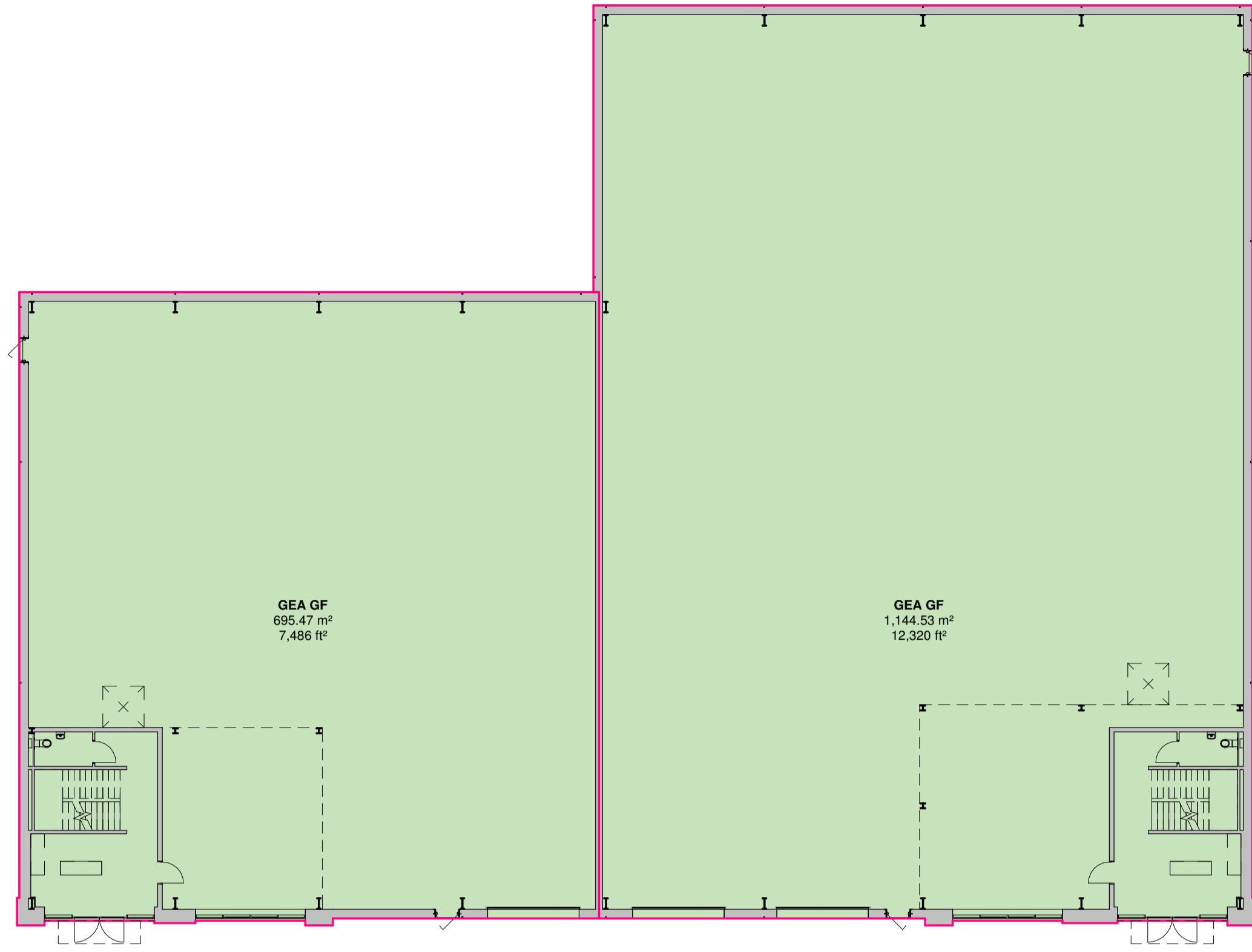


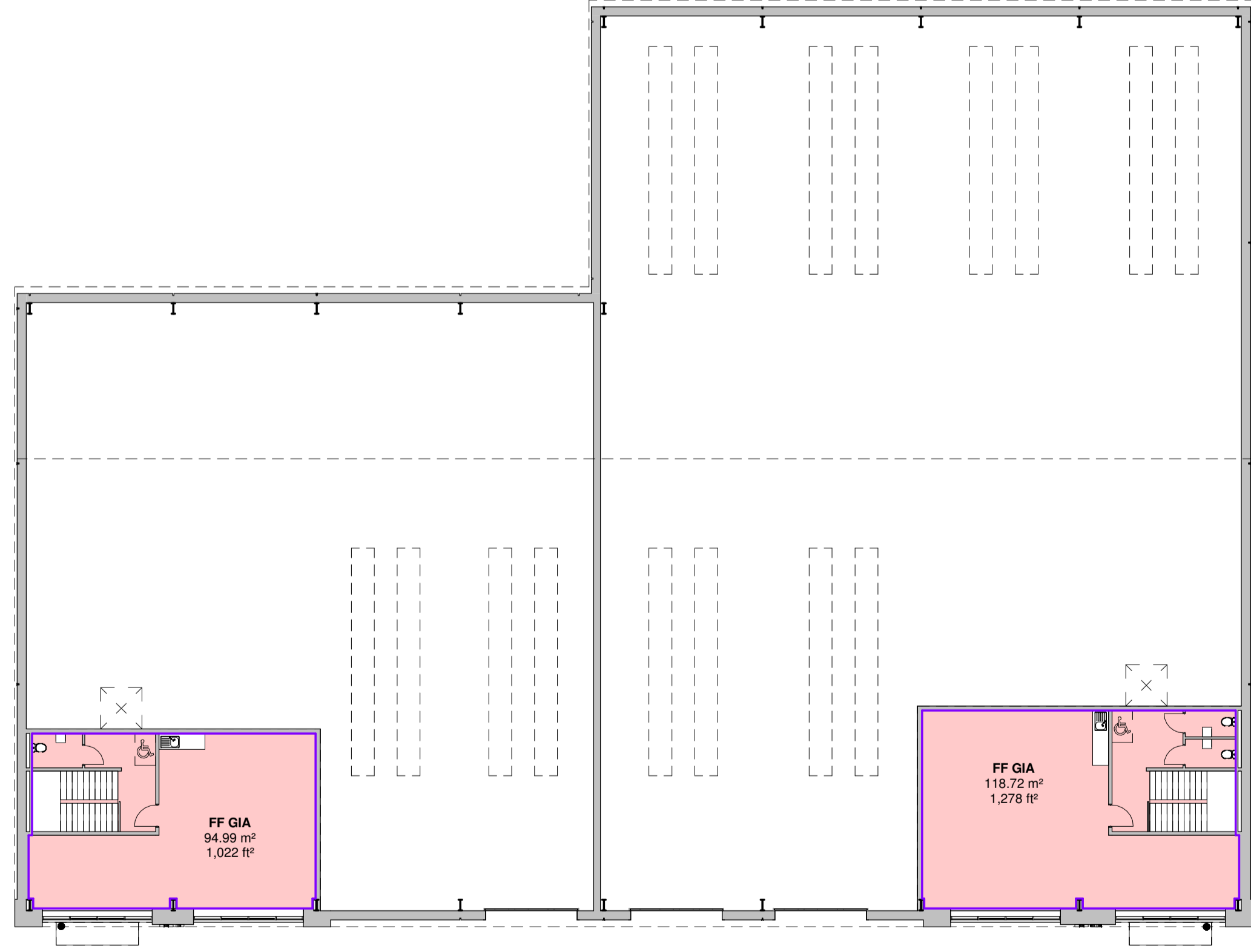
Hazard Identification		
ref	hazard	date



**1.0 GIA Level 0**  
1 : 200

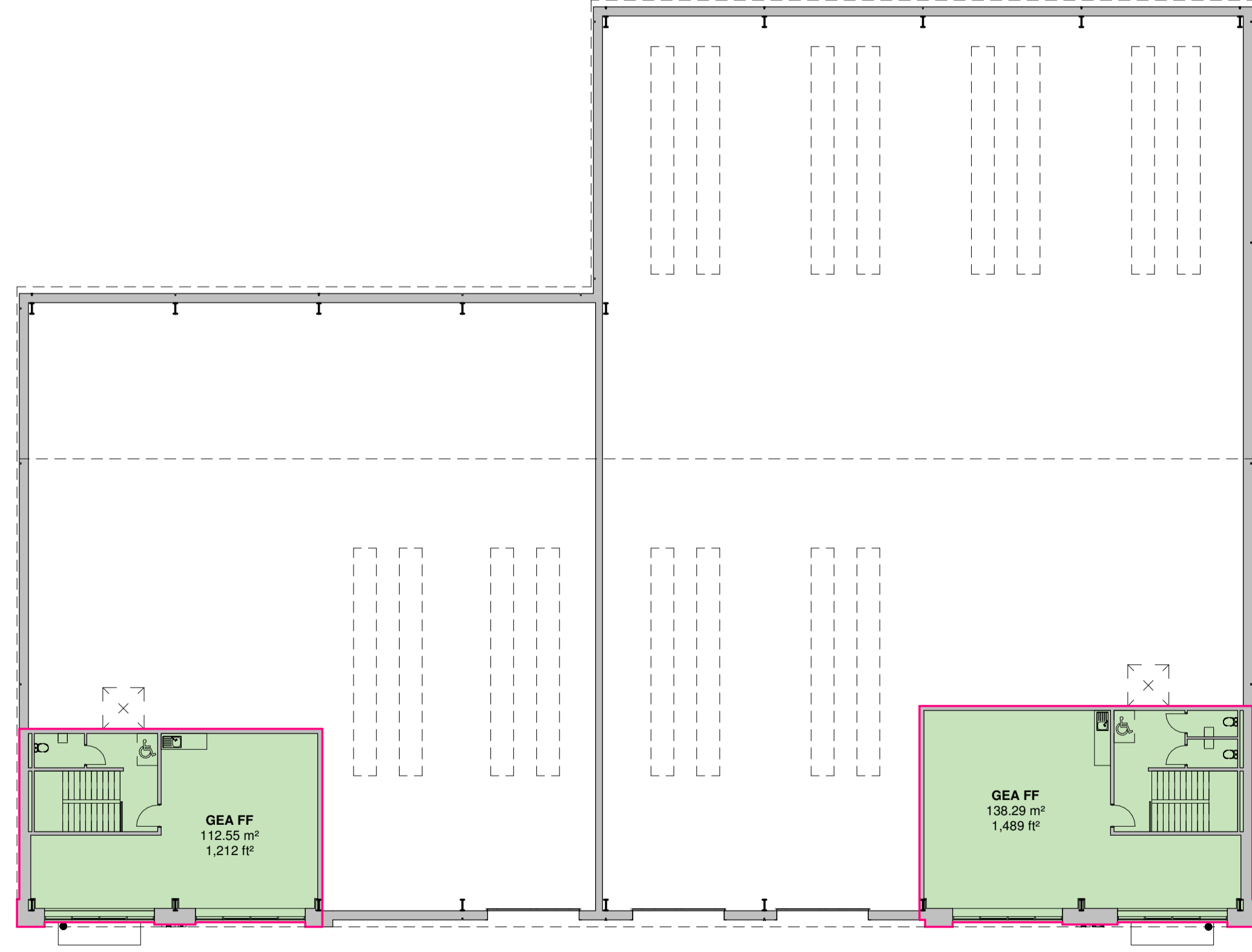


**2.0 GEA Level 0**  
1 : 200



**1.1 GIA Level 1**  
1 : 200

Area Schedule (GIA)				
Name	Area		%	
	Metric	Imperial		
UNIT 1				
GF GIA	656.31 m²	7,064 ft²	87.4%	
FF GIA	94.99 m²	1,022 ft²	12.6%	
2	751.30 m²	8,086 ft²	100.0%	
UNIT 2				
GF GIA	1,092.65 m²	11,761 ft²	90.2%	
FF GIA	118.72 m²	1,278 ft²	9.8%	
2	1,211.37 m²	13,039 ft²	100.0%	
TOTAL: 4	1,962.67 m²	21,126 ft²		



**2.1 GEA Level 1**  
1 : 200

Area Schedule (GEA)				
Name	Area		%	
	Metric	Imperial		
UNIT 1				
GEA GF	695.47 m²	7,486 ft²	86.07%	
GEA FF	112.55 m²	1,212 ft²	13.93%	
2	808.03 m²	8,698 ft²	100.00%	
UNIT 2				
GEA GF	1,144.53 m²	12,320 ft²	89.22%	
GEA FF	138.29 m²	1,489 ft²	10.78%	
2	1,282.82 m²	13,809 ft²	100.00%	
TOTAL: 4	2,090.85 m²	22,508 ft²		

P3 Cores updated following client's comments	JC	20.11.20	JC
P2 Cores and facade updated following meeting with client.	JC	19.11.20	JC
P1 First Issue of Drawing	JC	16.11.20	JC

**C4 Projects**  
Quayside, Widnespool Business Park, Stockton Heath, WAA GHL  
t: 01925 751 852  
e: info@c4projects.co.uk  
www.c4projects.co.uk

Project Management • Architecture • Building Surveying • Cost Consultancy

Client  
LGIM

Project  
Industrial Development  
Fishponds Close, Wokingham

Drawing Title  
Building A, GIA & GEA

Status Purpose of Issue  
**S2 SUITABLE FOR INFORMATION**

Drawn by	JC	Created	12.11.2020
C4 Job no.	19137	Scale	1 : 200 @ A1

Dwg no.	Rev
19137-C4P-BA-ZZ-DR-A-9200	P3

This page is intentionally left blank