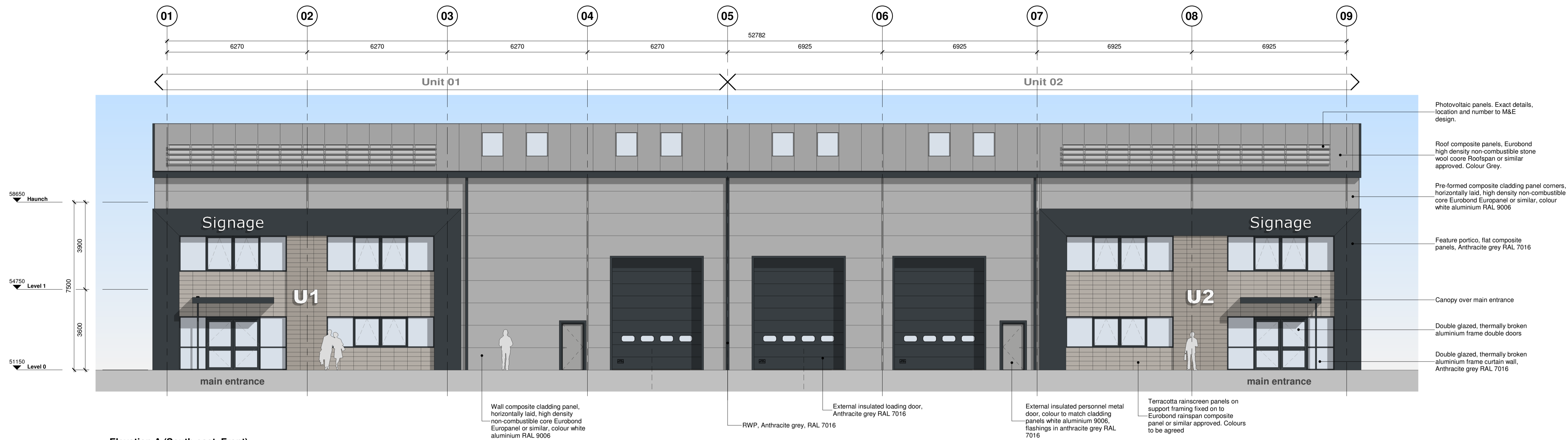


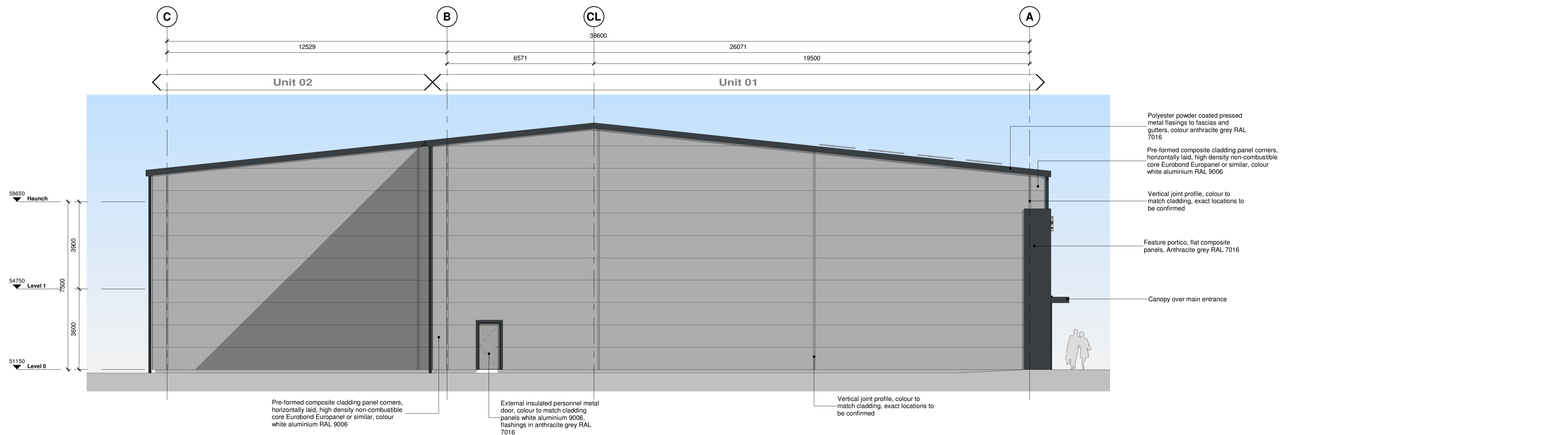
Hazard Identification		
ref	hazard	date



- Photovoltaic panels. Exact details, location and number to M&E design.
- Roof composite panels, Eurobond high density non-combustible stone wool core Roofspan or similar approved. Colour Grey.
- Pre-formed composite cladding panel corners, horizontally laid, high density non-combustible core Eurobond Europanel or similar, colour white aluminium RAL 9006
- Feature portico, flat composite panels, Anthracite grey RAL 7016
- Canopy over main entrance
- Double glazed, thermally broken aluminium frame double doors
- Double glazed, thermally broken aluminium frame curtain wall, Anthracite grey RAL 7016

- Wall composite cladding panel, horizontally laid, high density non-combustible core Eurobond Europanel or similar, colour white aluminium RAL 9006
- RWP, Anthracite grey, RAL 7016
- External insulated loading door, Anthracite grey RAL 7016
- External insulated personnel metal door, colour to match cladding panels white aluminium 9006, flashings in anthracite grey RAL 7016
- Terracotta rainscreen panels on support framing fixed on to Eurobond rainspan composite panel or similar approved. Colours to be agreed

A Elevation A (South-east, Front)
1:100



- Polyester powder coated pressed metal flashings to fascias and gutters, colour anthracite grey RAL 7016
- Pre-formed composite cladding panel corners, horizontally laid, high density non-combustible core Eurobond Europanel or similar, colour white aluminium RAL 9006
- Vertical joint profile, colour to match cladding, exact locations to be confirmed
- Feature portico, flat composite panels, Anthracite grey RAL 7016
- Canopy over main entrance

- Pre-formed composite cladding panel corners, horizontally laid, high density non-combustible core Eurobond Europanel or similar, colour white aluminium RAL 9006
- External insulated personnel metal door, colour to match cladding panels white aluminium 9006, flashings in anthracite grey RAL 7016
- Vertical joint profile, colour to match cladding, exact locations to be confirmed

B Elevation B (South-West, Side path)
1:100

Rev	Revision Details	Drawn	Date	Checked
P4	Windows added following client's comments	JC	20.11.20	JC
P3	Core and facade updated following meeting with client.	JC	19.11.20	JC
P2	Entrance feature materials updated following client's comments	JC	16.11.20	JC
P1	First Issue of Drawing	JC	09.11.20	JC

C4 Projects
Quayside, Widespool Business Park, Stockton Heath, WAA 6HL
t: 01925 751 852
e: info@c4projects.co.uk
www.c4projects.co.uk

Project Management • Architecture • Building Surveying • Cost Consultancy

Client
LGIM

Project
Industrial Development
Fishponds Close, Wokingham

Drawing Title
Building A, Elevations A & B

Status Purpose of Issue
S2 SUITABLE FOR INFORMATION

Drawn by JC **Created** 22.10.2020
C4 Job no. 19137 **Scale** 1:100 @ A1

Dwg no.	Rev
19137-C4P-BA-ZZ-DR-A-2100	P4

This page is intentionally left blank