

103

Health Inequalities Action Group Dashboard

Monthly Update from Action Group

June 2021

Public Health Team
Wokingham Borough Council
Public.Health@Wokingham.gov.uk

Section 1

Progress of action group

Highlights and Key Achievements

Purpose of Group

To reduce the avoidable differences in people's health across social groups, demographics, and geography.

To promote prevention and early intervention that is proportionate to the level of disadvantage.



Progress of Action Group Continued



Group formed



Membership confirmed



Priorities agreed
[see below]



Identification of potential reporting structures and indicators commenced



Terms and references agreed

Objectives

105

- 1** To review the key strategies/plans/services across all partner organisation(s)
- 2** To identify work which contributes to reducing Wokingham's health inequalities
- 3** To map where existing reporting of work occurs and who is responsible for this
- 4** To agree process by which regular reporting can be centrally reported and collated for the Wellbeing Board's ongoing steering and governance
- 5** Identify gaps or risk and opportunities for mitigation
- 6** Identify opportunities for partnership working

Key Achievements

Group Priorities identified



Cardiovascular
Disease



Covid Recovery



Children and Families

Health inequality reporting mechanisms identified

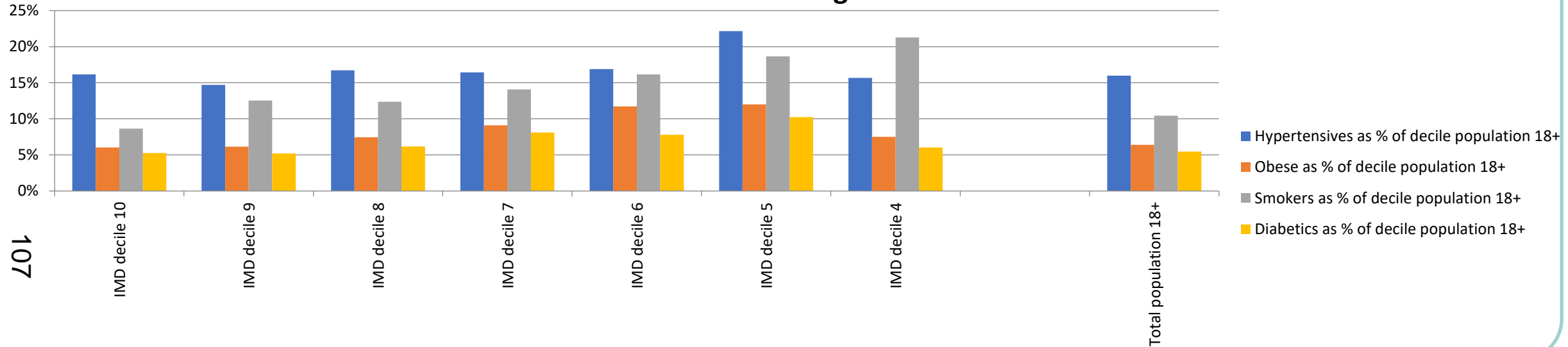


Section 2

106

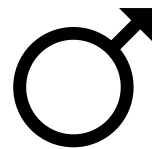
Priority 1: Cardiovascular Disease (CVD)

Percentage of people with certain condition by Index of Multiple Deprivation (IMD) decile in Wokingham



Life expectancy gap between most and least deprived areas in Wokingham

3.3
years



6.6
years

Smoking prevalence in Wokingham

Adults
8.4%

**Adults in routine/
manual occupation**
23.4%

Local Reports

Health checks

People **invited** for NHS health check:

19/20

Q2 20/21

1,684

0

People **receiving** NHS health check:

19/20

Q2 20/21

1,087

0

Physical Activity

Awaiting data

VCS

Awaiting data

Smoking Cessation

No. of Successful **4** and **12** week quits by Target Group in Q3 2020/21

29	25	24	19	8	6
Routine & Manual workers-		Diagnosed LTC		BME	
4	3	4	4	1	1
Pregnant women		Never worked/unemployed		>18	

No of clients who set a quit date and successful 4 and 12 week quits

	Quarter 3 2020/21	Year To Date
Set A Quit Date	39	105
4-week quits	25	61
12-week quits	21	41

National Reports

British Heart Foundation Report (2020)

7.4m

7.4 million people in the UK are living with heart and circulatory diseases

50%

50% of heart attacks and strokes in the UK are associated with high blood pressure

5m

Up to 5 million people in the UK are living with undiagnosed high blood pressure

Actions

Health Check service review paper

Further Considerations

Need for data on inequalities and dietary habits of Wokingham residents

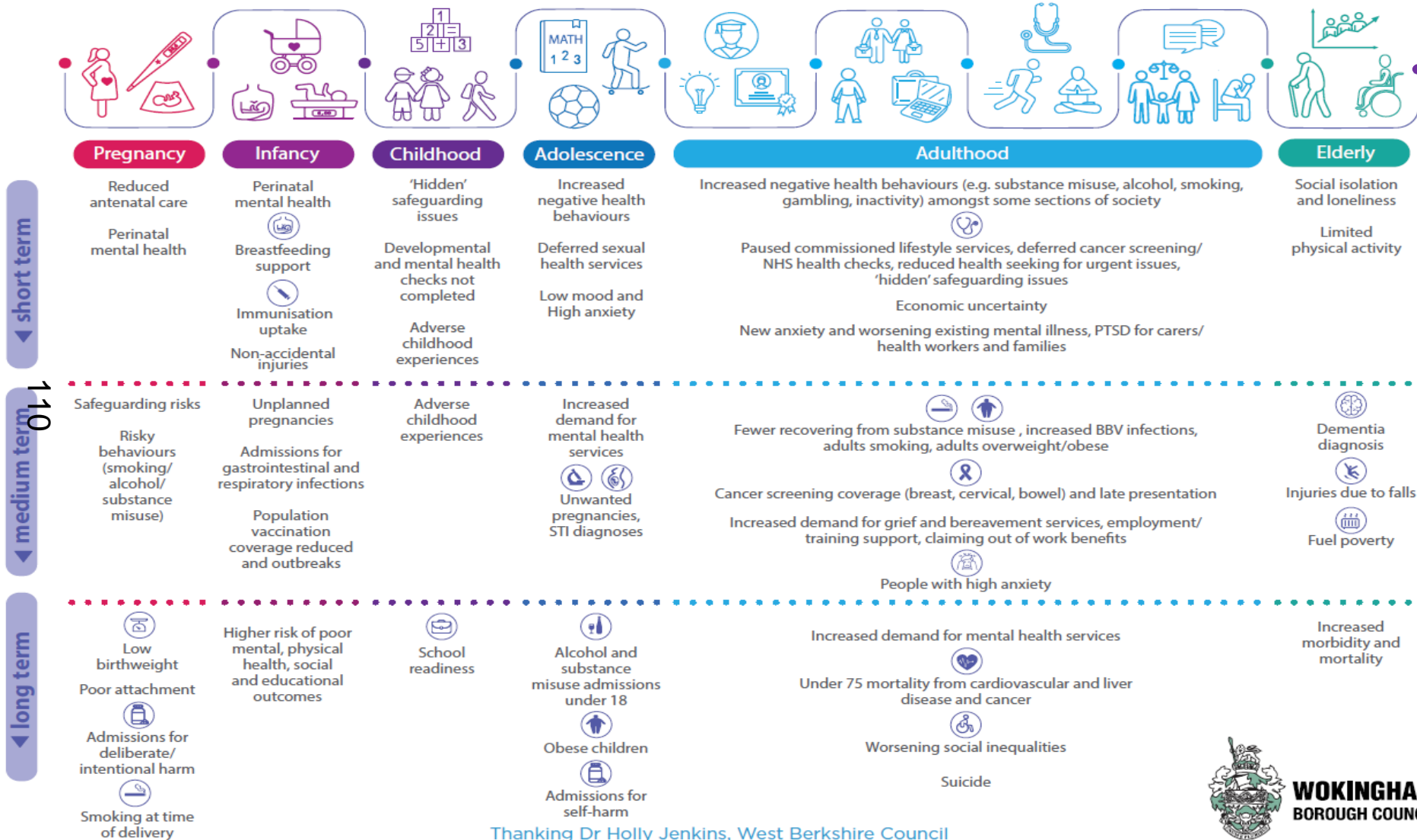
Section 3

Priority 2: Covid Impact and Recovery

Why this priority?

Impacts of Covid-19 pandemic across the lifecycle

○ Symbol indicates PHOF indicator



Why?

This is a priority for our group because:

COVID-19 has **highlighted** health inequalities and we want to make sure pandemic hasn't **exacerbated** those inequalities.



Thanking Dr Holly Jenkins, West Berkshire Council

Local Reports

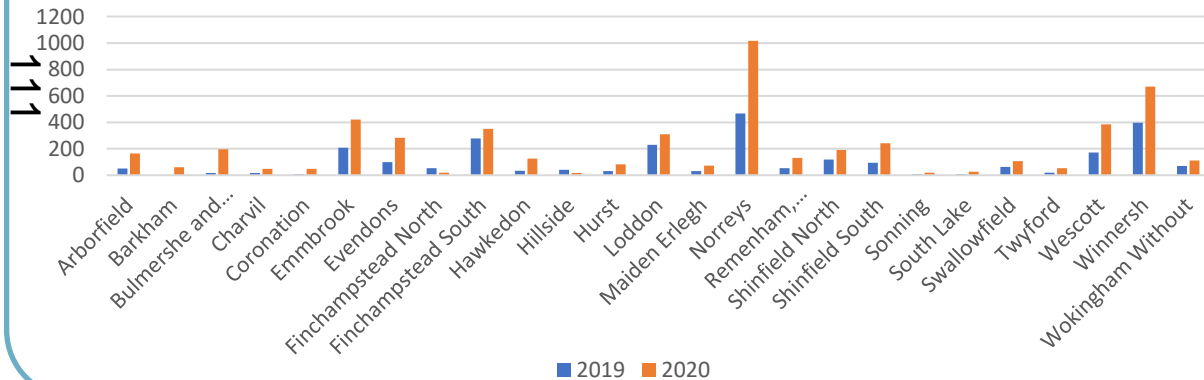
Foodbank Usage

Data obtained from Wokingham Foodbank

51% Increase between April 2019 – March 2020 and April 2020 – March 2021

64% Cause of crisis (low income) increased by 64%

Appendix 1: Total Number of Foodbank Clients: A Comparison between April 2019 - March 2020 and April 2020 - March 2021



Covid Grants

414 Applied and received support via WBC

Cancer referrals

Cancer referral numbers decreased during first lockdown similar to national report [See next slide for local data]

National Reports

Trussell Trust Report (May 2021)

51% → 72%

Increase of prevalence of poor mental health in people referred to a foodbank in the TT network

6x

People reporting **poor health** were 6x more likely to be food insecure than people reporting **'excellent' health**

Macmillan Cancer report (May 2021)

42,000

Missing' diagnoses in England. (Oct 2020)

11%

Urgent referrals still 11% behind 2019 levels in August 2020

20 months

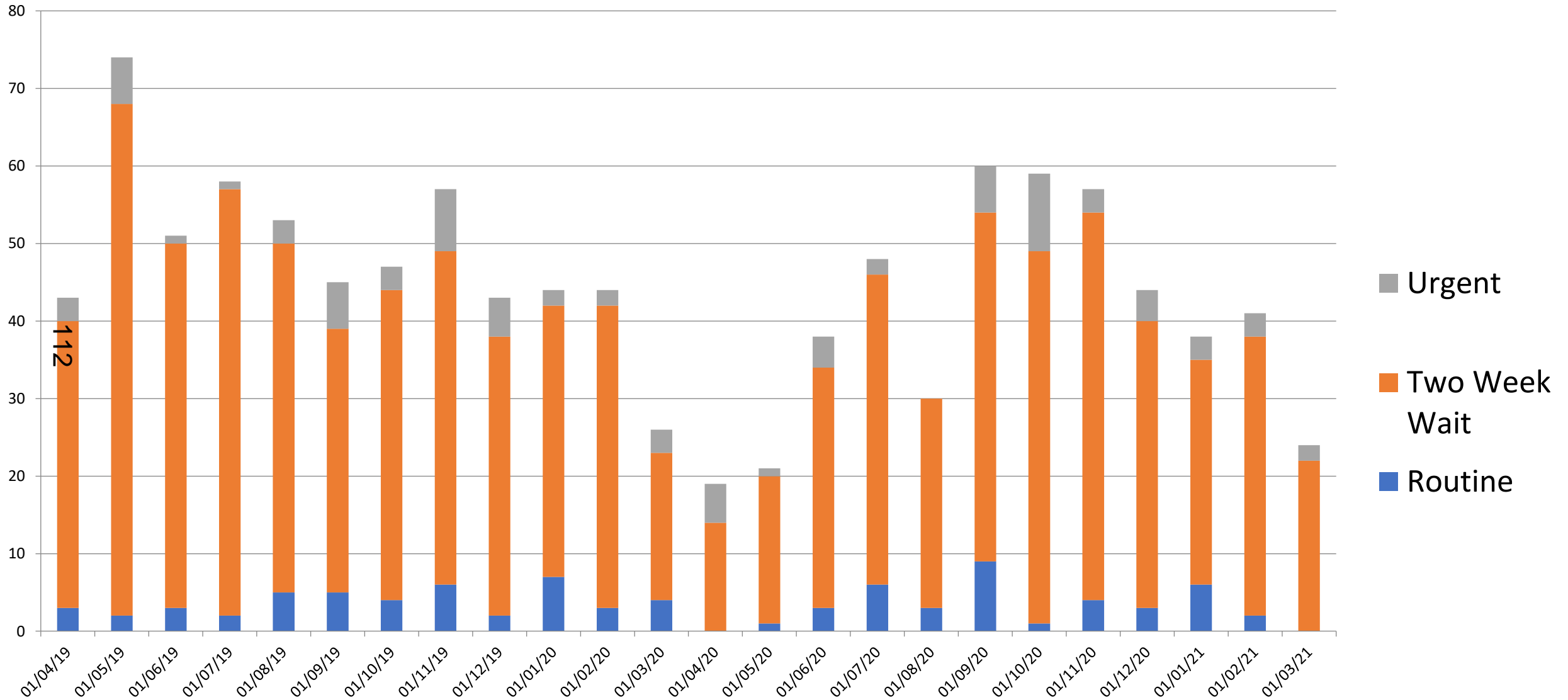
It would take 20 months to work through this diagnosis backlog if activity was increased to 10% above pre-pandemic levels and sustained.

Actions

1 **Summer 2021:** Campaign for prostate cancer and cervical screening

2 Ascertaining health services data

Cancer referrals each month by referral priority in Wokingham



Section 4

Priority 3: Children and Families

Long-term

Childhood circumstances, behaviours, and environment will have an effect on health and quality of life throughout an individual's lifespan.



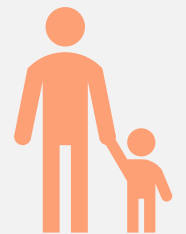
114 Wider impact

Tackling health inequalities in early years will have an effect in limiting inequalities throughout life, including the wider determinants of health.



Symbiotic nature

Improving the health of parents also improves the health of children and vice-versa.



Local Reports

Developmental Outcomes/ School Readiness

% of Foundation Stage children who **receive** FSM achieving a good level of development:

51%	55%	57%
Wokingham	South East	England

% of Foundation Stage children who **do not receive** FSM achieving a good level of development:

79%	77%	74%
Wokingham	South East	England

1/5
Free School Meals
2,328
children in Wokingham are receiving benefits-related FSM
(8% of all children)
(January 2021)

Ward Disparity
3% **20%**
Finchampstead North Shinfield North

Childhood Obesity
30%
Of children in Year 6 are overweight or obese
(2020)

21%
Of children in reception are overweight or obese
(2020)

School Nursing/ Health Visiting

Awaiting Data

National Reports

NCMD Report (May 2021)

1/12

Child deaths related to at least one factor of deprivation

10%

Increase in risk of death between each decile of increasing deprivation

1/5

Child deaths might avoided if children living in the most deprived areas had the same mortality risk as those living in least deprived

Actions

1 **Holiday Activities and Food (HAF) Program** – provides enrichment activities and breakfast or lunch for children in receipt of FSM during Easter, Summer, and Christmas holidays

2 **WBC offers medical support to children in care, including:**

- A health assessment of physical, emotional and mental health needs carried out by a registered medical practitioner
- A health plan, part of the child's overall care plan
- A review of the health plan at least once every six months until a child is 5 years old, and at least every 12 months after that

Section 5

Public Health Outcome Framework Indicators

116

The Public Health Outcomes Framework sets out a vision for public health to “improve and protect the nation’s health and improve the health of the poorest the fastest.” Public Health England publish a number of indicators that reflect the progress of four main outcomes:

1. Wider Determinants
2. Health Improvement
3. Health Protection
4. Healthcare and Premature Mortality

Public Health Outcome Framework Indicators

Compared with England

Better 95%

Similar

Worse 95%

Not compared

Quintiles:

Best

Worst

Health Inequalities (general indicators)	Period	Wokingham	SE Region	England
Gaps in the employment rate between those in contact with secondary mental health services and overall employment rate (Persons, 18-69 years)	2019/20	57.2	70.6	67.2
Cardiovascular Disease				
Estimated diabetes diagnosis rate	2018	67.7	75.2	78.0
Under 75 mortality rate from cardiovascular disease considered preventable (2019 definition)	2017-19	17.0	22.2	28.2
Smoking Prevalence in Routine & Manual Workers current smokers (18-64)	2018-19	23.4	23.7	23.2
COVID Impact and Recovery				
Under 75 mortality rate from cancer considered preventable (2019 definition)	2017-19	37.4	47.7	54.1
Excess under 75 mortality rate in adults with severe mental illness (SMI)	2015-17	492.4	499.6	355.1
Children and Families				
Percentage of looked after children whose emotional wellbeing is a cause for concern	2019/20	44.1	39.5	37.4
Percentage of children in low-income families (all dependent children under 20)	2016	6.3	12.7	17
Infant Mortality rate (Persons, <1 year);	2017-19	3.6	3.7	3.9
Free School Meals: % uptake among all pupils (school age)	2018	5.3	9.4	13.5
Average Attainment 8 score of children in care	2019	25.8	17.2	19.2
Primary School fixed period exclusions: rate per 100 pupils	2016-17	0.7	1.66	1.37
Secondary school fixed period exclusions: rate per 100 pupils	2016-17	4.2	7.9	9.4
Smoking status at time of delivery (all ages)	2018-19	5.0	11.3	12.8

Appendix

Group Membership

- Co-Chairs
 - Viki Elliot-King, Assistant Director, Children's Services (WBC)
 - Hannes Hagson, Public Health Registrar (WBC)
 - Ana Thompson, Population Health Management and Health Inequalities Officer (WBC)
- Martin Sloan, Assistant Director ASC Transformation and Integration (WBC)
- Ingrid Slade, Consultant in Public Health (WBC)
- Carol Cammiss, Director of Children's Services (WBC)
- Mark Robson, Integrated Development Network Lead (WBC)
-  Katie Summers, Operations Director, Wokingham and Digital Lead (NHS Berkshire West CCG)
-  Andrew Price, Wokingham Locality Manager & Population Health Intelligence Lead (NHS Berkshire West CCG)
- Dr. Rupa Joshi, Clinical Director for Wokingham North PCN, GP based at Woodley Practice
- Philip Bell, Interim CEO (Involve Community Service)
- Lisa Evans, Head of Service, Brokerage & Support Team, Adult Social Care (WBC)
- Deana Humphries, Community Engagement Lead (WBC)
- Yvonne Mhlanga, Head of Mental Health Commissioning (NHS Berkshire West CCG)
- Sarita Rakhra, Lead Commissioning Manager (NHS Berkshire West CCG)
- Will Roper, Customer Insight and Performance Manager (WBC)
- Public Health Team (WBC)

Special thanks to Zaid Raja for his help in putting together this Dashboard.

This page is intentionally left blank