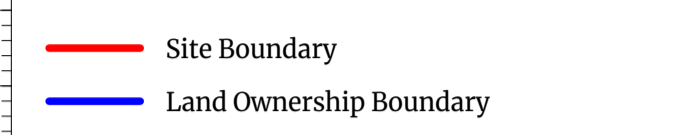




**Notes**  
 Check all dimensions on site. Do not scale from this drawing.  
 Report any discrepancies and omissions to HLM Architects.  
 This Drawing is Copyright ©

**General note:**  
 Refer to 00 Series for General Arrangement drawings  
 Refer to 20 Series for Slab Extent / Penetration drawings  
 Refer to 25 Series for External Wall drawings  
 Refer to 25 Series for Internal Wall drawings  
 Refer to 25 Series for External Opening drawings  
 Refer to 25 Series for Internal Opening drawings  
 Refer to 30 Series for Ceiling drawings  
 Refer to 30 Series for Roof Detail drawings  
 Refer to 40 Series for Finishes drawings  
 Refer to 40 Series for Sanitary drawings  
 Refer to 75 Series for Fire Strategy drawings  
 Refer to 90 Series for Signage drawings

Drawing to read in conjunction with all relevant NBS specifications, Consultants Information/ Reports, Sub-contractor drawings and any relevant Specialist Information.



Rev.	Description	Date	By	Chk.
P07	REMOVAL OF PEDESTRIAN BRIDGE FROM PROPOSAL	15/07/20	AP	HLM
P06	ADJUSTMENT TO RED LINE BOUNDARY	24/05/20	AP	HLM
P05	ADJUSTMENT OF BLUE LINE BOUNDARY	07/02/20	AP	HLM
P04	ADJUSTMENT OF RED LINE SITE BOUNDARY	06/02/20	AP	HLM
P03	ADJUSTMENTS TO PARKING LAYOUT	09/01/20	AP	HLM
P02	PARKING BAYS INDICATED	06/01/20	AP	HLM
P01	GREATER SITE CONTEXT ADDED	02/11/19	AP	HLM

Revisions Suitability  
 Project S2

**DINTON ACTIVITY CENTRE**

Client  
**REDS10 for WOKINGHAM BOROUGH COUNCIL**

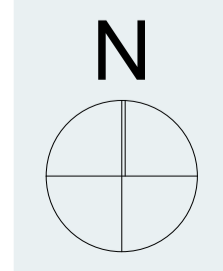
Title  
**EXISTING SITE PLAN**

Drawing No. Revision  
**DAC-HLM-00-00-DR-A-0001 P07**

Scale @ A1 Drawn  
 1:500 AP  
 Date Checked  
 02/09/2019 HLM

**HLM Architects**  
 © HLM Architects  
 Wool + Tailor Building  
 Fifth Floor  
 10-12 Aile Street  
 London E1 6DE  
 www.hlmarchitects.com  
 T. +44 (0) 20 7921 4800  
 F. +44 (0) 20 7921 4850  
 london@hlmarchitects.com

93





This page is intentionally left blank