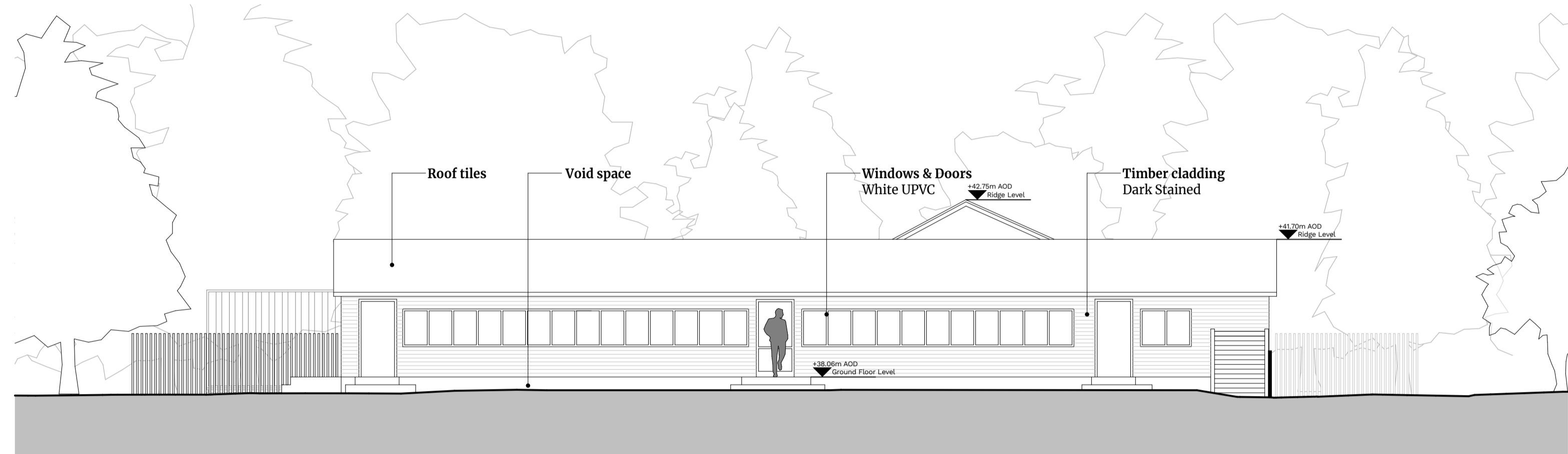


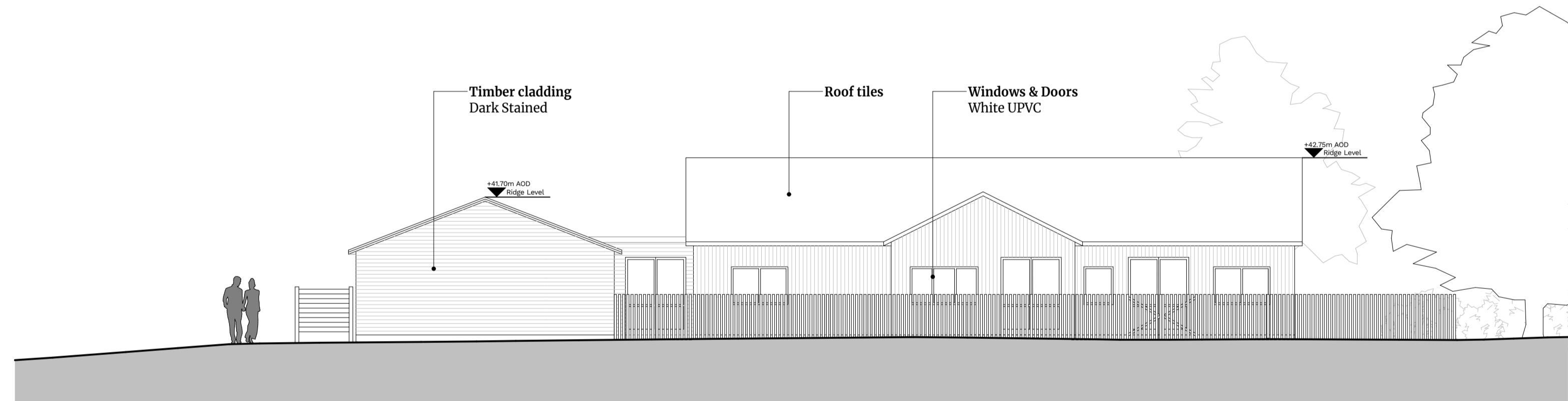
Existing North Elevation

1:100



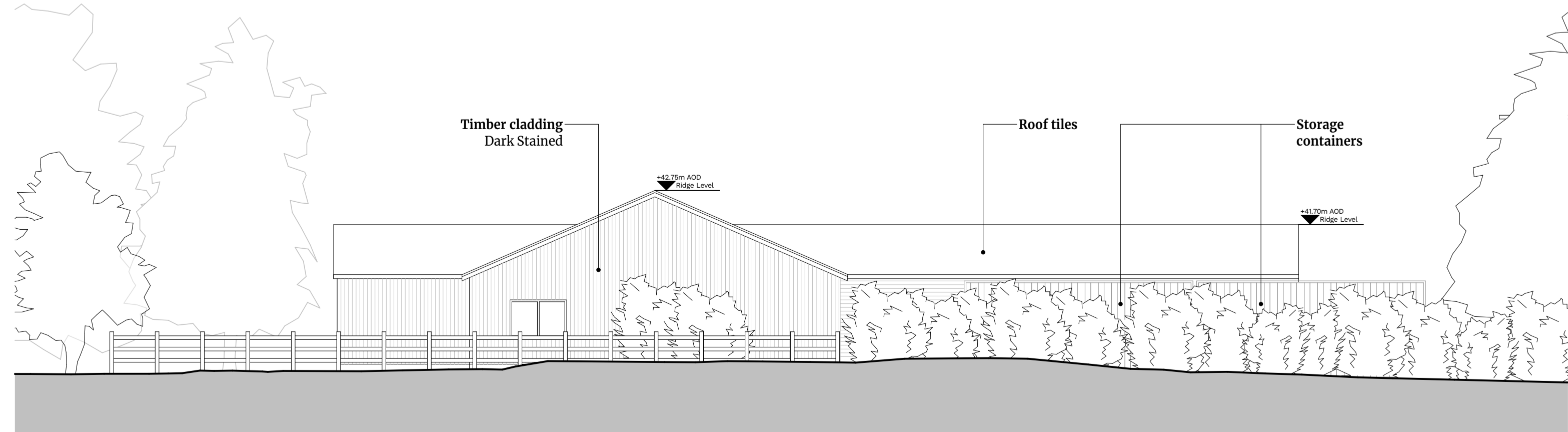
Existing West Elevation

1:100



Existing South Elevation

1:100



Existing East Elevation

1:100

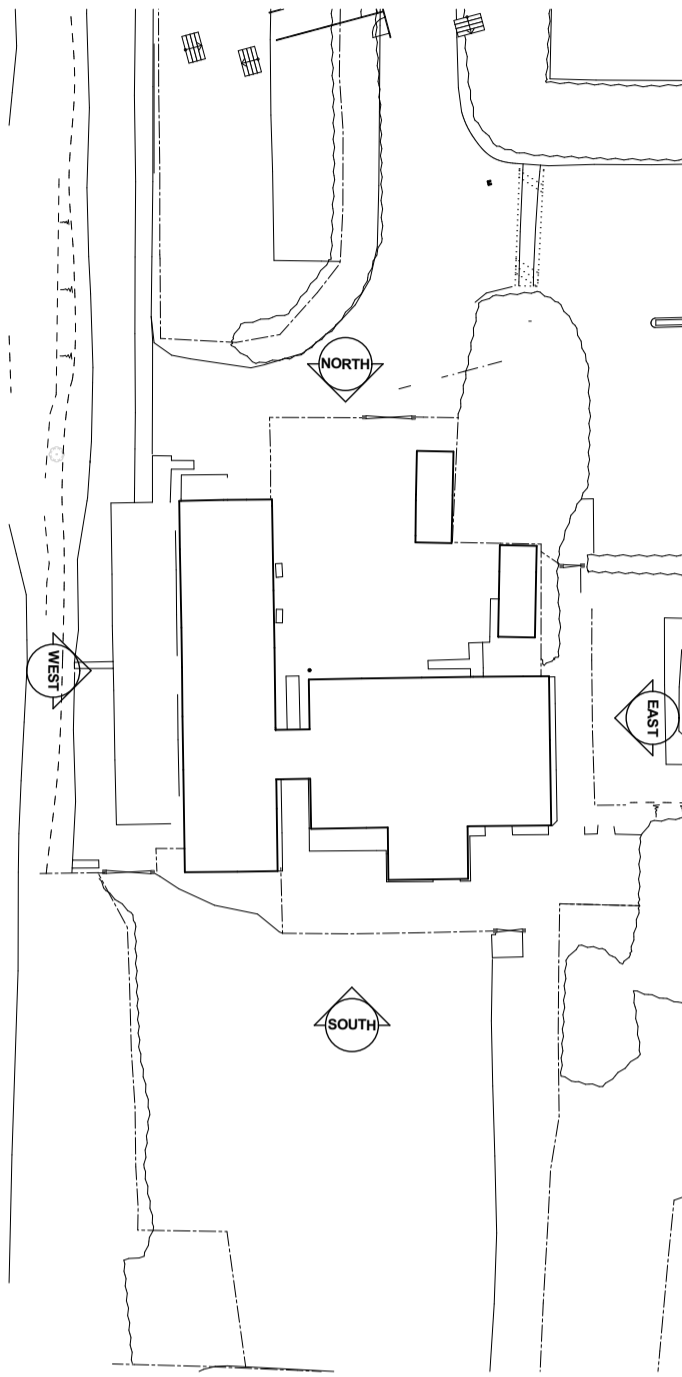
Notes

Check all dimensions on site. Do not scale from this drawing. Report any discrepancies and omissions to HLM Architects. This Drawing is Copyright ©

General note:

- Refer to 00 Series for General Arrangement drawings
- Refer to 20 Series for Slab Extent / Penetration drawings
- Refer to 25 Series for External Wall drawings
- Refer to 25 Series for Internal Wall drawings
- Refer to 25 Series for External Opening drawings
- Refer to 25 Series for Internal Opening drawings
- Refer to 30 Series for Ceiling drawings
- Refer to 30 Series for Roof Detail drawings
- Refer to 40 Series for Finishes drawings
- Refer to 40 Series for Sanitary drawings
- Refer to 75 Series for Fire Strategy drawings
- Refer to 90 Series for Signage drawings

Drawing to read in conjunction with all relevant NBS specifications, Consultants Information/ Reports, Sub-contractor drawings and any relevant Specialist Information.



Rev	Description	Date	By	Chk
Revisions				
				S2
Project				

DINTON ACTIVITY CENTRE

Client

REDS10 for WOKINGHAM BOROUGH COUNCIL

Title

EXISTING ELEVATIONS

Drawing No. Revision

DAC-HLM-01-XX-DR-A-0020

Scale @ A1 Drawn

1:100 AP

Date Checked

02/09/2019 HLM



© HLM Architects
Wool + Tailor Building
Fifth Floor
10-12 Alie Street
London E1 6DE

www.hlmarchitects.com
T. +44 (0) 20 7921 4800
F. +44 (0) 20 7921 4850
london@hlmarchitects.com



This page is intentionally left blank