

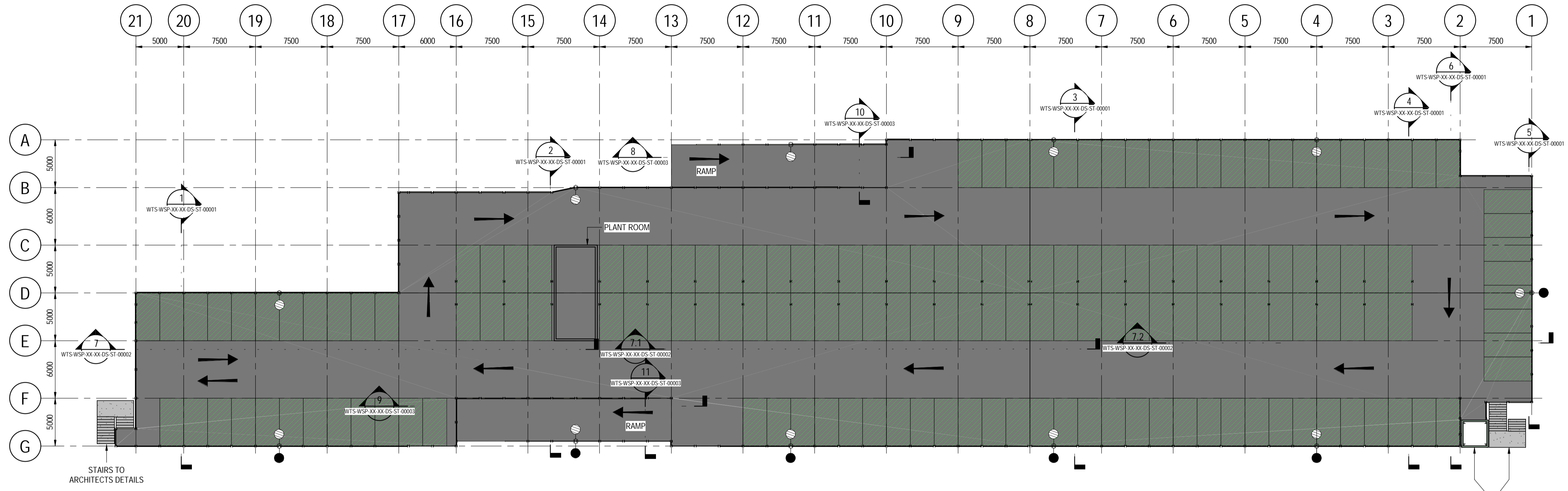
B01 960101 - Project: Womersley Triangle Scheme\WSP-XX-01-DR-ST-00001.dwg 24/02/2020 09:52:21

141

DO NOT SCALE

- NOTES:**
- THIS DRAWING IS TO BE READ IN CONJUNCTION WITH ALL RELEVANT ARCHITECTS, SERVICES AND ENGINEERS DRAWINGS TOGETHER WITH RELEVANT SPECIFICATIONS.
 - DIMENSIONS ARE NOT TO BE SCALED FROM THIS DRAWING.
 - CAR PARK DECK TO BE CONSTRUCTED IN STRUCTURAL STEELWORK. DECK TO BE PRE-CAST CONCRETE UNITS.

- KEY:**
- INDICATIVE LIGHTING UNIT MOUNTED TO CAR PARK STRUCTURE WITH TWIN LED LUMINAIRES AT 8m ABOVE GROUND LEVEL
 - INDICATIVE LIGHTING UNIT MOUNTED TO CAR PARK STRUCTURE WITH SINGLE LED LUMINAIRES AT 8m ABOVE GROUND LEVEL



FOR LIFT & STAIR INFORMATION REFER TO ARCHITECTS DRAWING WTS-HGP-SGN-ZZ-DE-PL-00005

NATIONAL RAIL BOUNDARY

LEVEL 01 PROPOSED PLAN
1:250

NOTE: THIS DRAWING HAS BEEN PRODUCED WITH THE INTENTION OF BEING VIEWED IN A COLOUR FORMAT FOR THE PURPOSE OF CLARITY. DO NOT COPY OR PRINT TO BLACK AND WHITE.

REV	DATE	BY	DESCRIPTION	CHK	APP
DRAWING STATUS: PLANNING					

2 London Square, Cross Lanes, Guildford, Surrey, GU1 1UN
T: +44 1483 528 400
<http://www.wsp.com>

CLIENT: WOKINGHAM BOROUGH COUNCIL

ARCHITECT: HGP ARCHITECTS

PROJECT: WINNERSH TRIANGLE STATION SCHEME

TITLE: LEVEL 01 PROPOSED PLAN

SCALE @ A1: 1:250	CHECKED: TD	APPROVED: TD
PROJECT NUMBER: 70062449	DESIGNED: CM	DRAWN: CM
	DATE: 15/01/2020	

DRAWING No: WTS-WSP-XX-01-DR-ST-00001 REV: P01

© WSP UK Ltd

This page is intentionally left blank