

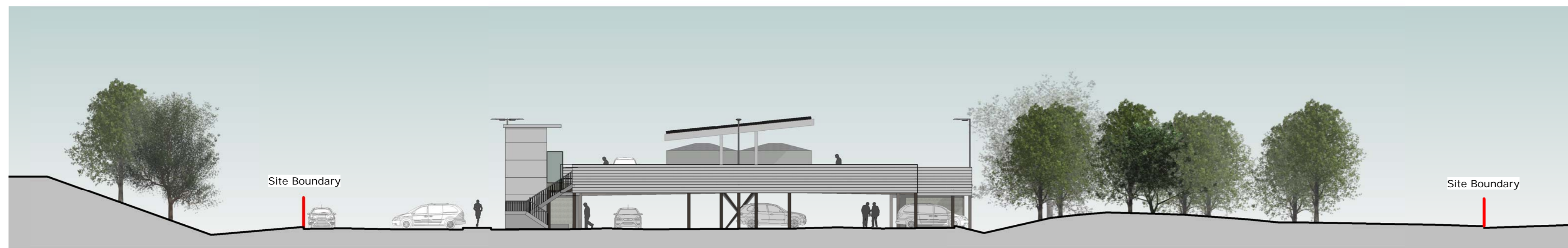
1 Proposed North Elevation

1 : 200



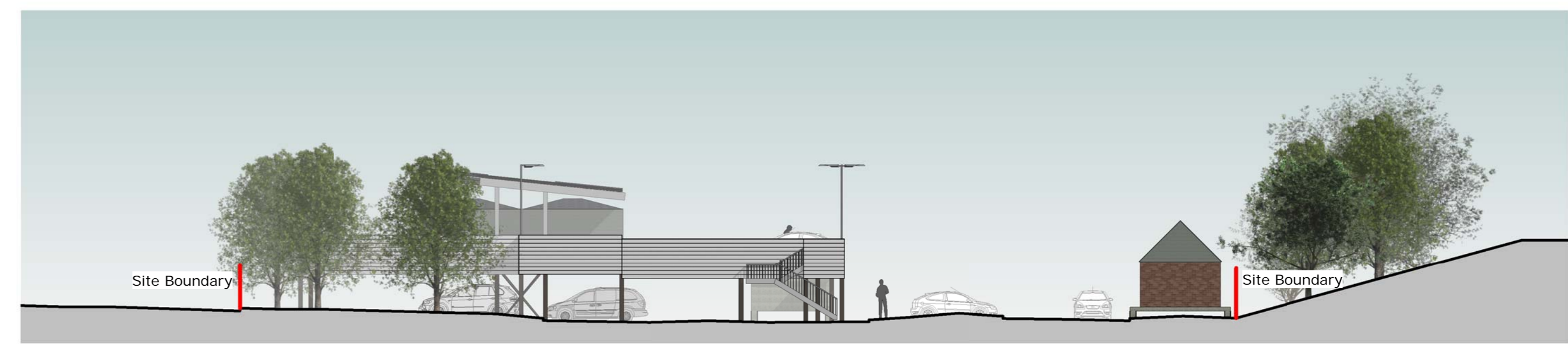
2 Proposed South Elevation

1 : 200



3 Proposed East Elevation

1 : 200



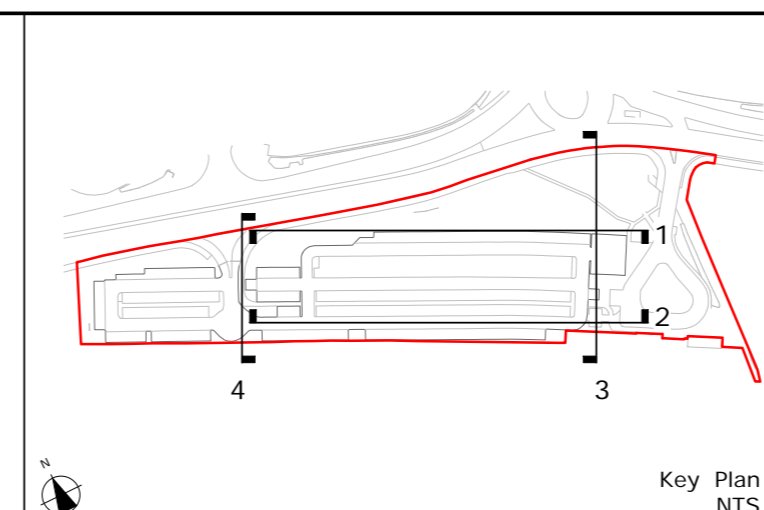
4 Proposed West Elevation

1 : 200

139



Please Note:
 This drawing must not be scaled. Dimensions to be checked on site and any discrepancies are to be highlighted to the Architect prior to construction.
 Topographical / Ordnance Survey information shown has been prepared by a third party. HGP accept no responsibility for accuracy or completeness of the survey.
 This drawing is to be read in conjunction with all other project drawings, construction notes and / or project specifications including those by other project consultants and specialists. All discrepancies should be reported immediately.
 Design subject to detail development / approval. Measurements and accommodation schedules subject to amendments following coordinated input by others. Drawings cannot be finalised until approval / confirmation by relevant authorities and Client.



Legend
 Key Plan
 NTS

Rev.	Description	DATE	DB	CB
P02	Drawing number amended to suit WSP4	27.03.20	AP	LM
P01	document management system	11.03.20	AP	LM
P00	Issued for Planning			

Date	03/03/20
Drawn By/Checked By	AP / LM
Scale	1:200 @ A0
Revision	P02
Project	Winnersh Triangle Station Schemes
Title	Proposed Elevations
Dwg#	WTS-HGP-SGN-ZZ-DE-PL-00004
Status	PLANNING

HGP
 ARCHITECTS
 Furzehall Farm, Wickham Road
 Fareham, Hampshire
 PO16 7JH
 01329 283 225
 email@hgp-architects.co.uk
 www.hgp-architects.co.uk
 HGP Architects Ltd. Copyright Reserved

Winchester Borough Council
 Civic Offices
 Stuke End
 Winchester
 SO40 1BN

This page is intentionally left blank