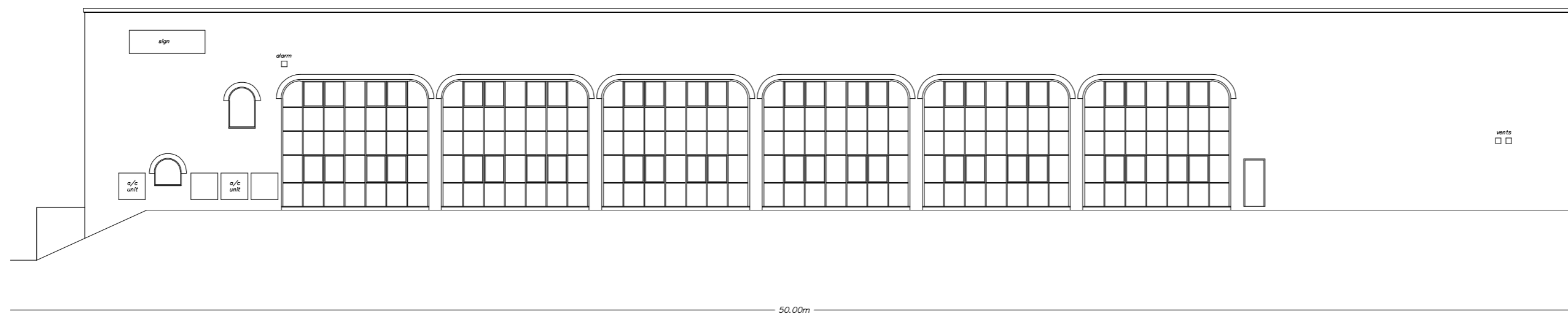
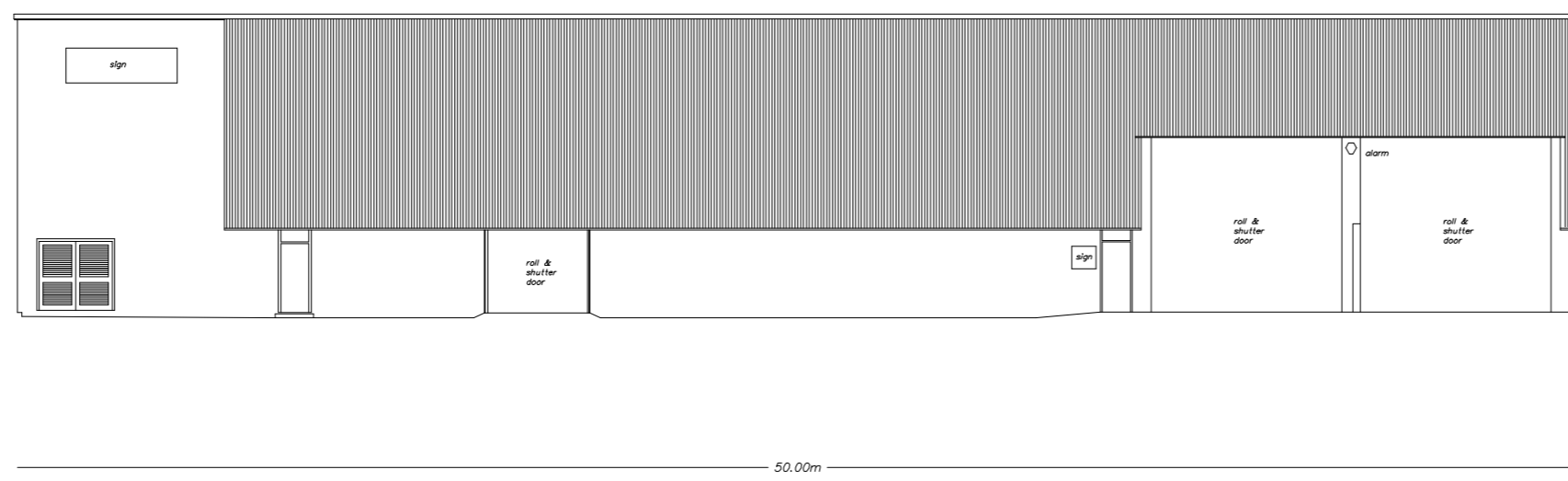


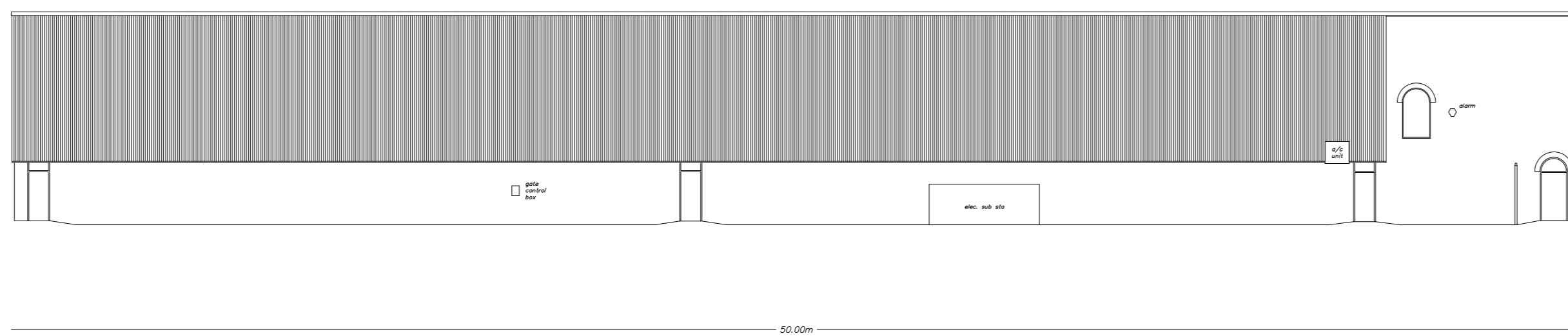
FRONT ELEVATION



SIDE ELEVATION (WEST)



REAR ELEVATION



SIDE ELEVATION (EAST)

Notes
1. Levels in metres relative to OSBM situated on Railway Bridge, value 51.81m.

Revisions		
REV	DETAILS	DATE

Project
UNIT 1

Job
ELEVATIONS

For
Intersurgical Limited
Crane House, Molly Millars Lane
Wokingham
Berkshire RG41 2RZ Tel: 0118 965 6300

By
Developers Land Surveys
17 Bolton Crescent
Windsor
Berkshire SL4 3JH Tel: 01753 851477

Scale	Drawn	Checked
1:200 @ A2	WHD	CGF
Date	Drawing No.	Rev.
February 2018	1463/2	

This page is intentionally left blank