

Appendix 1 – Overarching Plans

The following plans show development around Wokingham and the town centre and are used to demonstrate context and identify locations for the projects involved in Regeneration.

All of these developments contribute towards the ongoing process of improving Wokingham and are in line with the Core Strategy, Managing Development Delivery plan and the Wokingham Town Centre Masterplan SPD

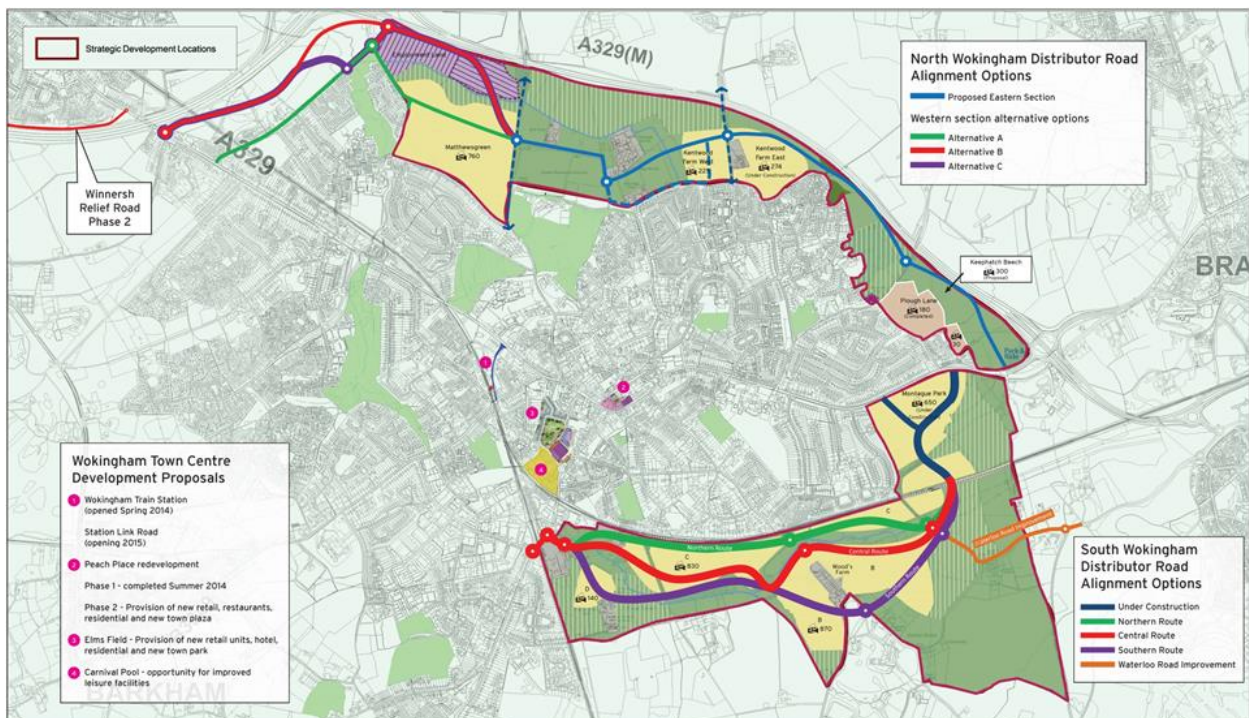
The plans are as follows

- Plan 1 – Wokingham Development
- Plan 2 – Wokingham Town Centre Masterplan SPD
- Plan 3 – Town Centre Infrastructure Improvement projects

Plan 1 – Wokingham Development

This plan shows the location of the North Wokingham and South Wokingham Strategic Development Locations (SDL's) and their proximity to the town centre regeneration projects.

Please note that this plan was produced in 2013 and as such does not show the latest regeneration schemes as shown on Plan 3.



Plan 2 – Wokingham Town Centre Masterplan SPD

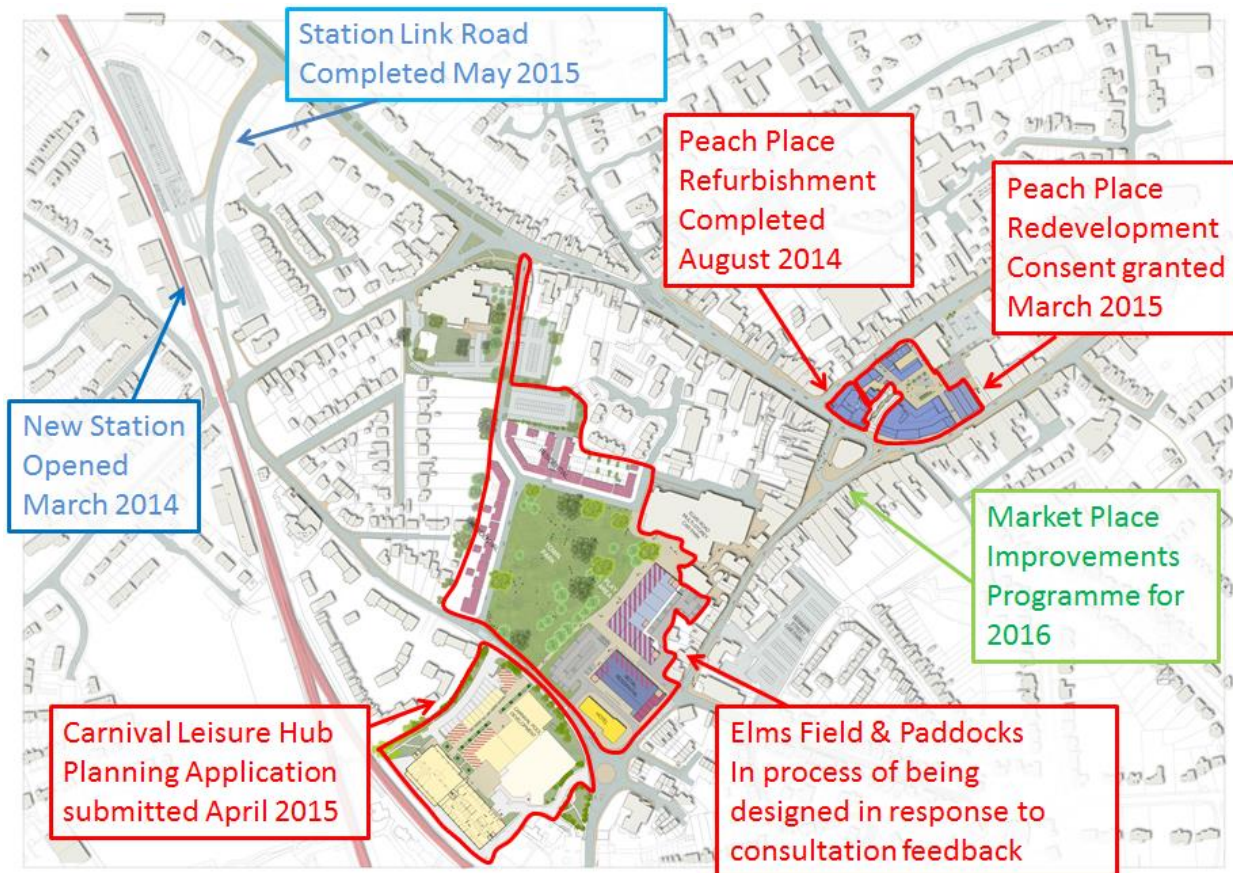
The following plan is taken from the Wokingham Town Centre Masterplan Supplementary Planning Document (SPD).

The role of the Masterplan is to provide planning guidance on development within the town centre and it is a strong material consideration in the assessment of planning application within the town centre.



Plan 3 – Town Centre Infrastructure Improvement Projects

This plan shows the major infrastructure projects delivered and planned for the town centre.



Key

Projects in **Red** are part of the Town Centre Regeneration programme

Projects in **Blue** are part of the Highways Infrastructure delivery programme

Projects in **Green** are part of the Environmental Improvements programme

This page is intentionally left blank