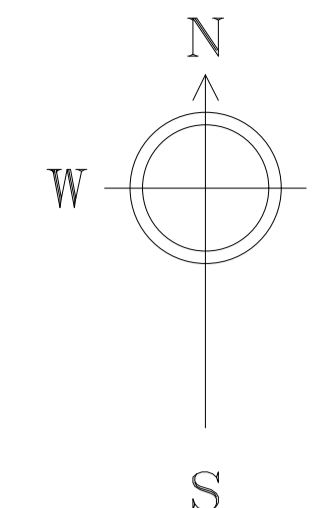


NOTE:
THIS DRAWING HAS BEEN PRODUCED BY ELECTRONIC MEANS.

SHOULD THE SCALE MEASUREMENTS BE TAKEN BY MEANS OTHER THAN ELECTRONIC (e.g. FROM A PRINTED COPY), THE FOLLOWING MUST BE TAKEN INTO CONSIDERATION BEFORE SCALING IS UNDERTAKEN:

1. ENSURE THAT THE COPY HAS BEEN PRINTED/PLOTTED ON THE STATED SHEET SIZE WITH THE PLOTTING SCALE SET TO A CORRECT RATIO
2. ENSURE THAT AN ADEQUATE ALLOWANCE (DEPENDANT ON THE STATED SCALE) IS MADE FOR THE INEVITABLE DISTORTIONS INTRODUCED BY PLOTTING/PRINTING AND COPYING PROCESSES



SOFT LANDSCAPE WORKS SPECIFICATION

PREPARATION

SUBSOIL SURFACE PREPARATION Loosening: - Light and non-cohesive subsoils: When ground conditions are reasonably dry, loosen thoroughly to a depth of 300 mm. - Stiff clay and cohesive subsoils: When ground conditions are reasonably dry, loosen thoroughly to a depth of 450 mm.

IMPORTED TOPSOIL (TO BS 3882) Provide to fill planting beds. Grade: To BS 3882, Multi Purpose Grade. Source: Submit proposals. Submit: Declaration of analysis including information detailing each of the relevant parameters given in BS 3882, clause 6 and table 2.

SPREADING TOPSOIL Layers: - Depth (maximum): 150 mm. - Gently firm each layer before spreading the next. Depths after firming and settlement (minimum): 450 mm for shrub planting and 150mm for lawn. Crumb structure: Do not compact topsoil. Preserve a friable texture of separate visible crumbs wherever possible.

FINISHED LEVELS OF TOPSOIL AFTER SETTLEMENT Above adjoining paving or kerbs: 20 mm. Shrub areas: Higher than adjoining grass areas by 25 mm. Within root spread of existing trees: Unchanged. Adjoining soil areas: Marry in. Thickness of mulch: Included.

TIMES OF YEAR FOR PLANTING Deciduous trees and shrubs: Late October to late March. Conifers and evergreens: September/ October or April/ May. Herbaceous plants: September/ October or March/ April. Container grown plants: At any time if ground and weather conditions are favourable. Ensure that adequate watering and weed control is provided.

CLIMATIC CONDITIONS General: Carry out the work while soil and weather conditions are suitable. Do not plant during periods of frost or strong winds.

PLANTING SHRUBS & TREES

STANDARD : The National Plant Specification

Plant Stock: Materially undamaged, sturdy, healthy and vigorous of good shape and without elongated shoots. Hardiness: Grown in a suitable environment and hardened off. Health: Free from pests, diseases, discoloration, weeds and physiological disorders. Root system and condition: Balanced with branch system. Plant species: true to name and native species to be of local provenance as defined in the National Plant Specification.

PLANT HANDLING, STORAGE TRANSPORT AND PLANTING

To CPSE 'Handling and establishing landscape plants' standard. Protect plants from frost and handle plants with care. Protect from mechanical damage and do not subject to shock, e.g. by dropping from a vehicle. Planting: Upright or well balanced with best side to front.

ORNAMENTAL SHRUBS

To planting plan layout and density/centres as shown. Excavate 2 days (maximum) before planting. Pits to be 150 mm wider than roots when fully spread and 300 mm deep. Pit bottom improvement Break up to a depth of 150 mm, incorporating 25 g of approved slow release fertilizer per planting pit. Backfilling material: topsoil

CONTAINER GROWN PLANTS/ TREES Growing medium: With adequate nutrients for plants to thrive until permanently planted. Plants: Centred in containers, firmed and well watered. Root growth: Substantially filling containers, but not root bound, and in a condition conducive to successful transplanting. Hardiness: Grown in the open for at least two months before being supplied. Containers: With holes adequate for drainage when placed on any substrate commonly

AFTER PLANTING

Watering immediately after planting, thoroughly and without damaging or displacing plants or soil. Lightly firm soil around plants and fork and/ or rake soil, without damaging roots, to a fine tilth with gentle cambers and no hollows.

SPECIMEN TREES: 1000 x 1000 x 700mm deep pits.

Sides and base of pits cross-rippled at 450mm/cs to open subgrade for rooting. Pits backfilled with loam topsoil ameliorated with 100 litres planting compost, 50 litres water retention granules and 900 gm slow-release fertiliser. All planting from boards to prevent puddling.

TREE STAKING:

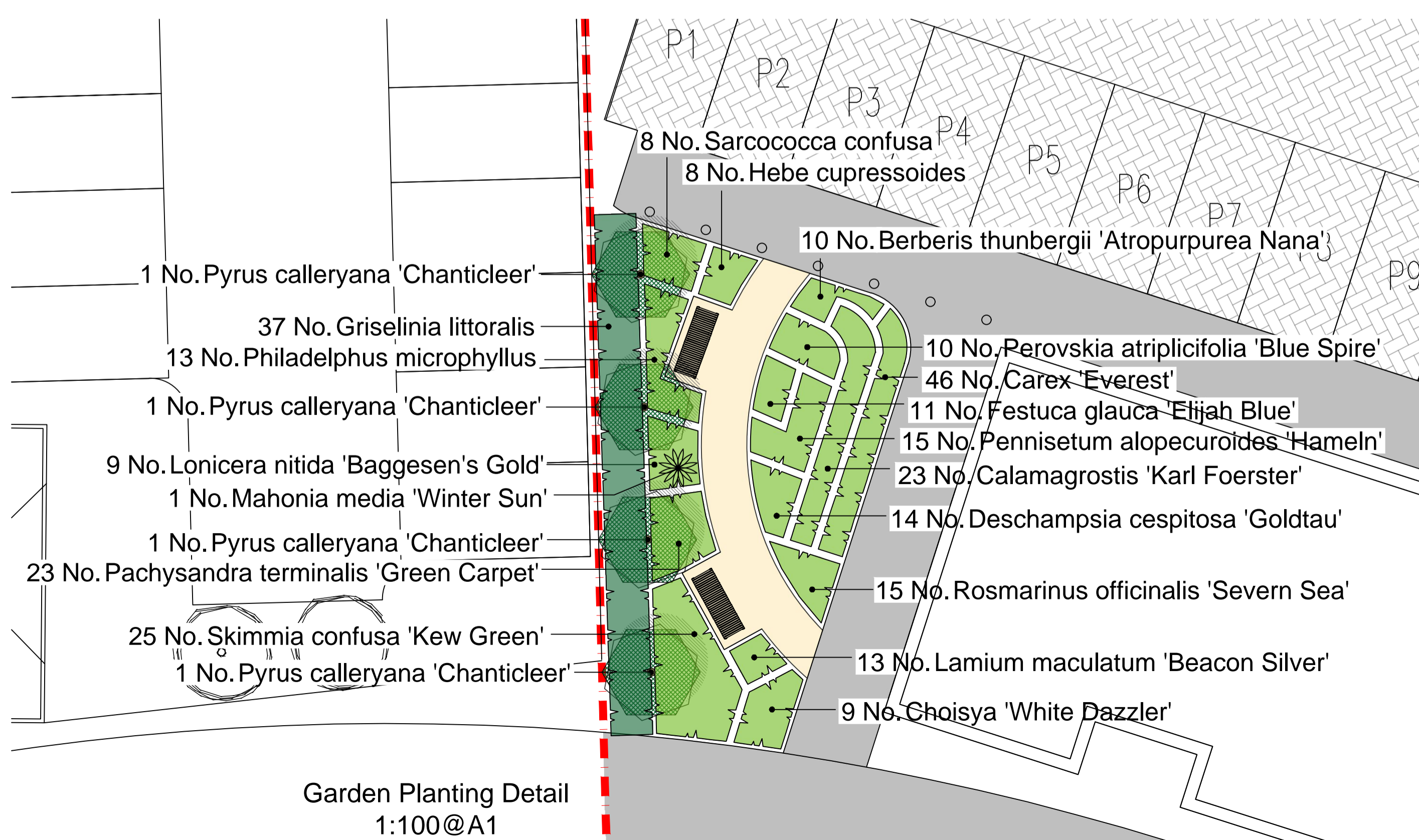
Low double timber stakes with natural Hessian tree ties - see detail below. NB trees along Crow Arch Lane to be secured by underground anchors.

MULCHING SHRUB PLANTING BEDS Material: Medium grade bark mulch. - Purity: Free of pests, disease, fungus and weeds. Preparation: Clear all weeds. Water soil thoroughly. Coverage: 50 mm depth. Finished level of mulch: 30 mm below adjacent grassed or paved areas.

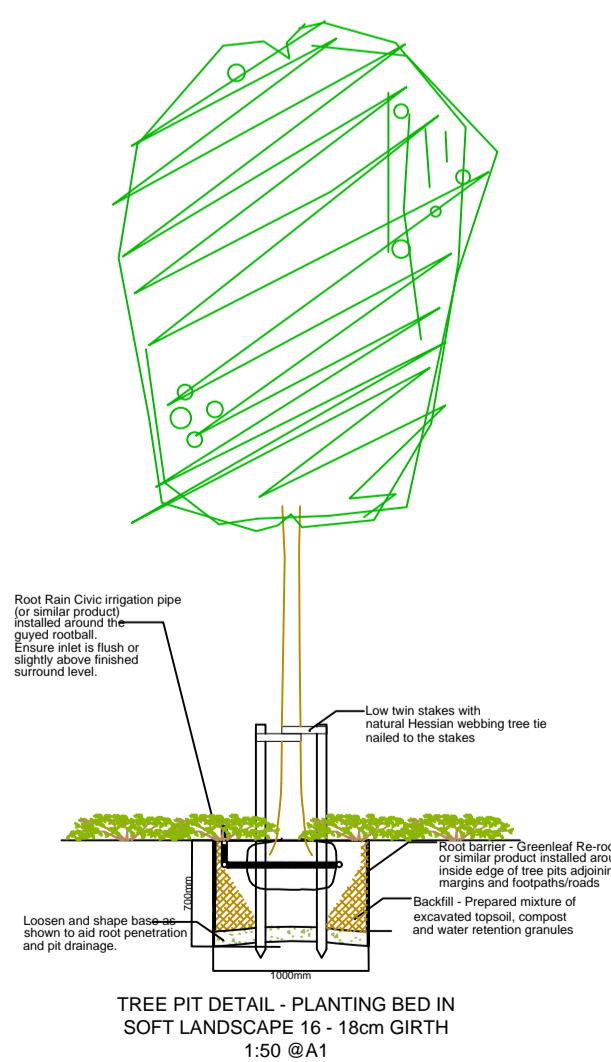
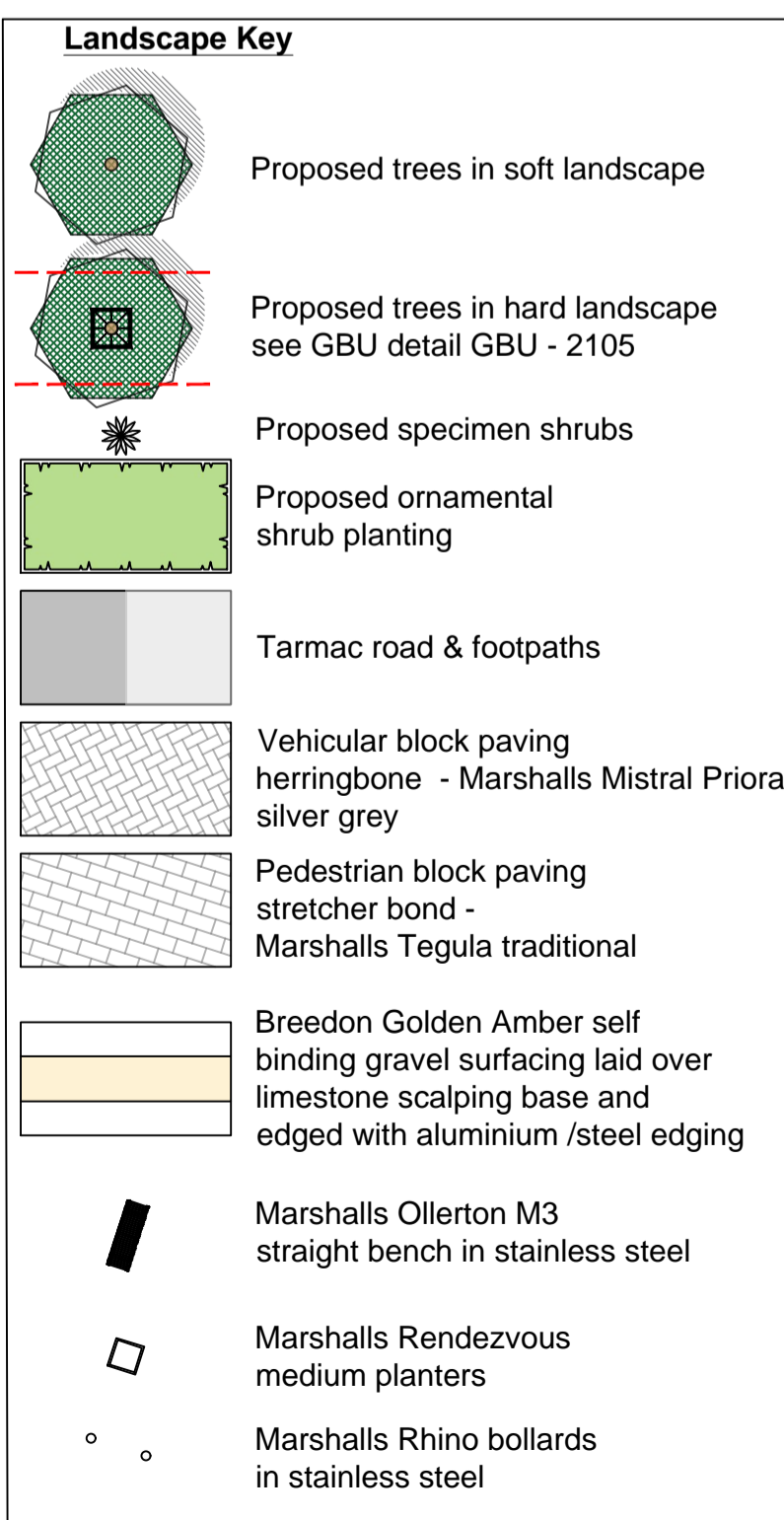


Garden
See Planting Detail below

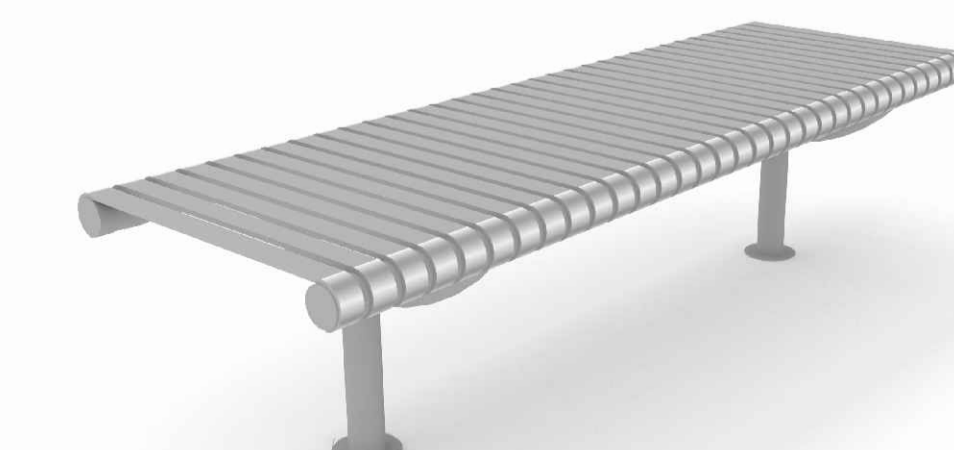
105



Garden Planting Detail
1:100@A1



Marshall's Rendezvous medium planters. Planting to comprise Rosmarinus prostratus, Ceanothus thyrsiflorus repens, Choisya 'White Dazzler', Lavandula 'Vera', Potentilla davurica Abbotwood. In combinations



Marshall's Ollerton M3 stainless steel bench

Planting Schedule

Trees					
Number	Species	Girth	Height	Specification	Density
5 -	Carpinus betulus 'A Beekman'	16-18cm	4.0-4.5m	clear stem RB	Counted
6 -	Corylus colurna	18-20cm	4.0-5.0m	RB	Counted
6 -	Pyrus calleryana 'Chanticleer'	16-18cm	4.0-4.5m	RB	Counted
Total :17 No.					

Shrubs					
Number	Species	Pot Size	Height	Specification	Density
10 -	Berberis thunbergii 'Atropurpurea Nana'	3L	15-20cm	3 brks	5/m ²
28 -	Berberis thunbergii 'Red Chief'	5L	40-50cm	3 brks	3/m ²
13 -	Caryopteris clandon. 'Heavenly Blue'	3L	25-30cm	3 brks	3/m ²
39 -	Choisya 'White Dazzler'	10L	70-80cm	5 brks	3/m ²
5 -	Cistus corbariensis	3L	25-30cm	3 brks	3/m ²
40 -	Cotoneaster conspicuus 'Decorus'	5L	35-40cm	3 brks	3/m ²
93 -	Cotoneaster franchetii	5L	50-60cm		3/m ²
49 -	Euonymus jap. 'Green Rocket'	5L	35-40cm	3 brks	3/m ²
37 -	Griselinia littoralis	10L	80-90cm		0.375Ctr
8 -	Hebe cupressoides	5L	30-35cm		4/m ²
18 -	Ilex crenata 'Fastigiata'	5L	60-70cm	3 brks	3/m ²
48 -	Lavandula angustifolia 'Hidcote'	3L	25-30cm	5 brks	5/m ²
9 -	Lonicera nitida 'Baggesen's Gold'	5L	30-40cm		3/m ²
14 -	Lonicera nitida 'May Green'	5L	30-40cm	5 brks	3/m ²
1 -	Mahonia media 'Winter Sun'	10L	90-100cm	Specimen	Counted
54 -	Pachysandra terminalis 'Green Carpet'	3L	15-20cm		6/m ²
10 -	Perovskia atriplicifolia 'Blue Spire'	4L	20-25cm		4/m ²
13 -	Philadelphus microphyllus	5L	30-40cm		3/m ²
5 -	Phlomis fruticosa	3L	30-35cm	3 brks	3/m ²
44 -	Rosmarinus officinalis 'Severn Sea'	3L	15-20cm	3 brks	6/m ²
8 -	Sarcococca confusa	5L	30-40cm		3/m ²
25 -	Skimmia confusa 'Kew Green'	5L	30-40cm	3 brks	3/m ²
Total :571 No.					

Herbaceous			
Number	Species	Pot Size	Density
23 -	Calamagrostis 'Karl Foerster'	3L	4/m ²
46 -	Carex 'Everest'	2L	8/m ²
14 -	Deschampsia cespitosa 'Goldtau'	2L	6/m ²
11 -	Festuca glauca 'Elijah Blue'	2L	6/m ²
13 -	Lamium maculatum 'Beacon Silver'	2L	8/m ²
15 -	Pennisetum alopecuroides 'Hameln'	3L	4/m ²
11 -	Stachys byzantina 'Silver Carpet'	2L	5/m ²
Total :133 No.			

REV No
Rev A 01.04.19
Roof plan added
Rev B 18.07.19
Plan amendments to latest architects site layout. Tree cell underground dimensions amended. Planters added to street scene and type shown. Ollerton bench shown.

FLOYD MATCHAM
CHARTERED LANDSCAPE ARCHITECTS
URBAN DESIGN & MASTERPLANNING
PARSONAGE FARMHOUSE, 100BER, STURMINSTER NEWTON
DORSET, DT101JL, T 01747 838041, F 01747 838098
E info@floydmatcham.co.uk

DRAWING NAME
Planting Plan

CLIENT
Bovis Homes (Southern Counties)

PROJECT
MG Local Centre

JOB NO
TD922

DWG No
TD922_01B

SCALE
1:200@A1

DATE
03.19

This page is intentionally left blank