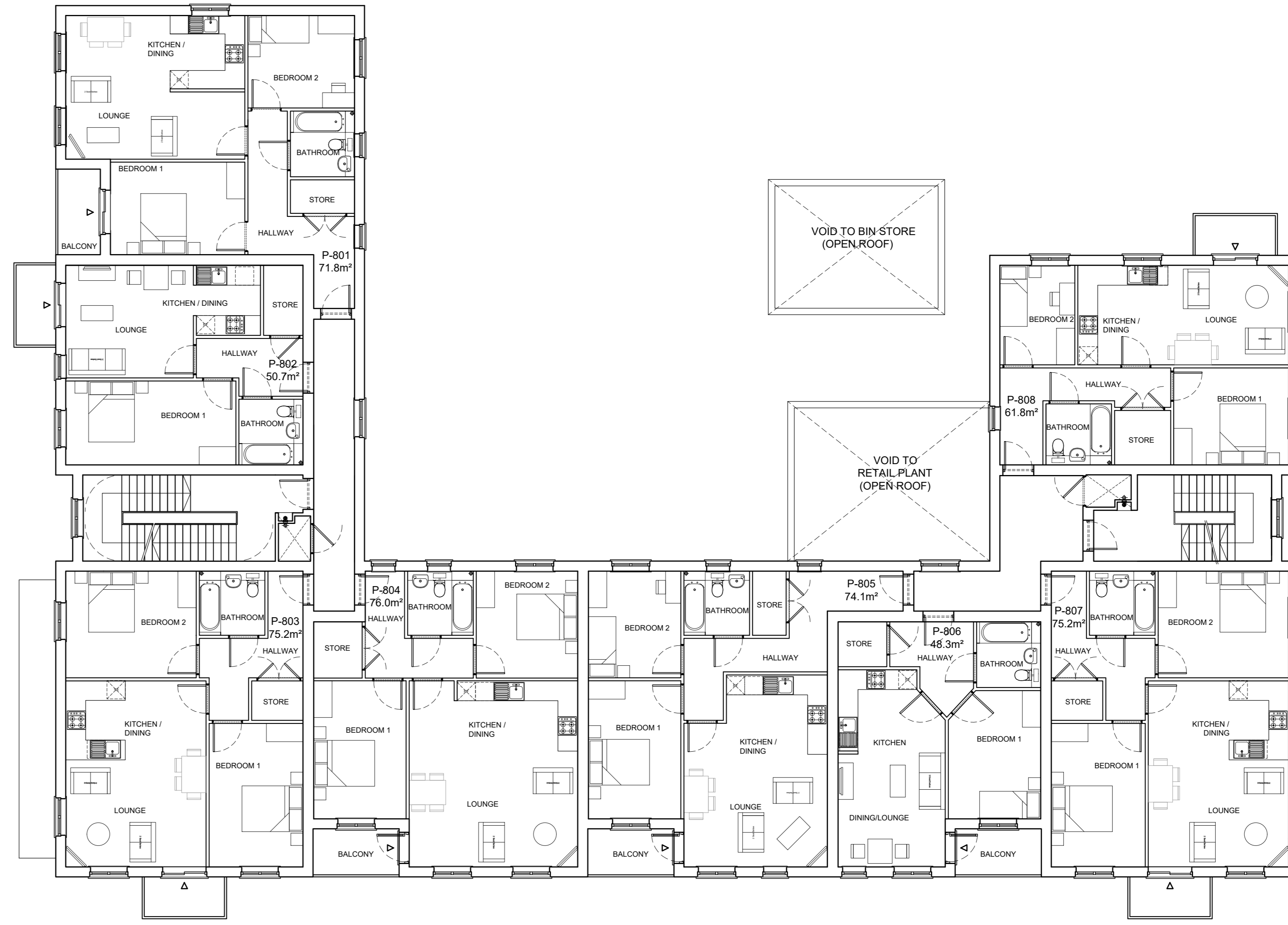
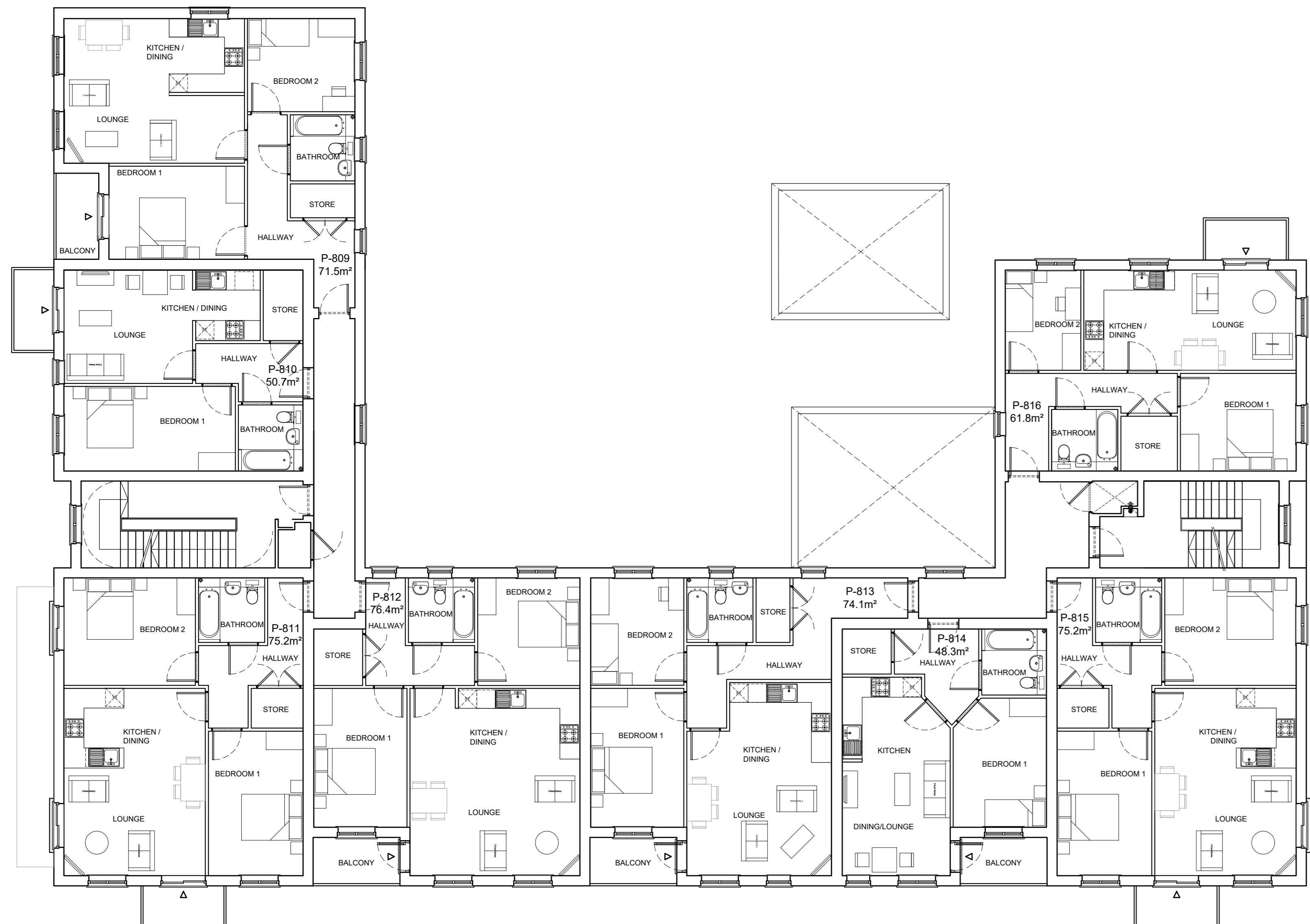


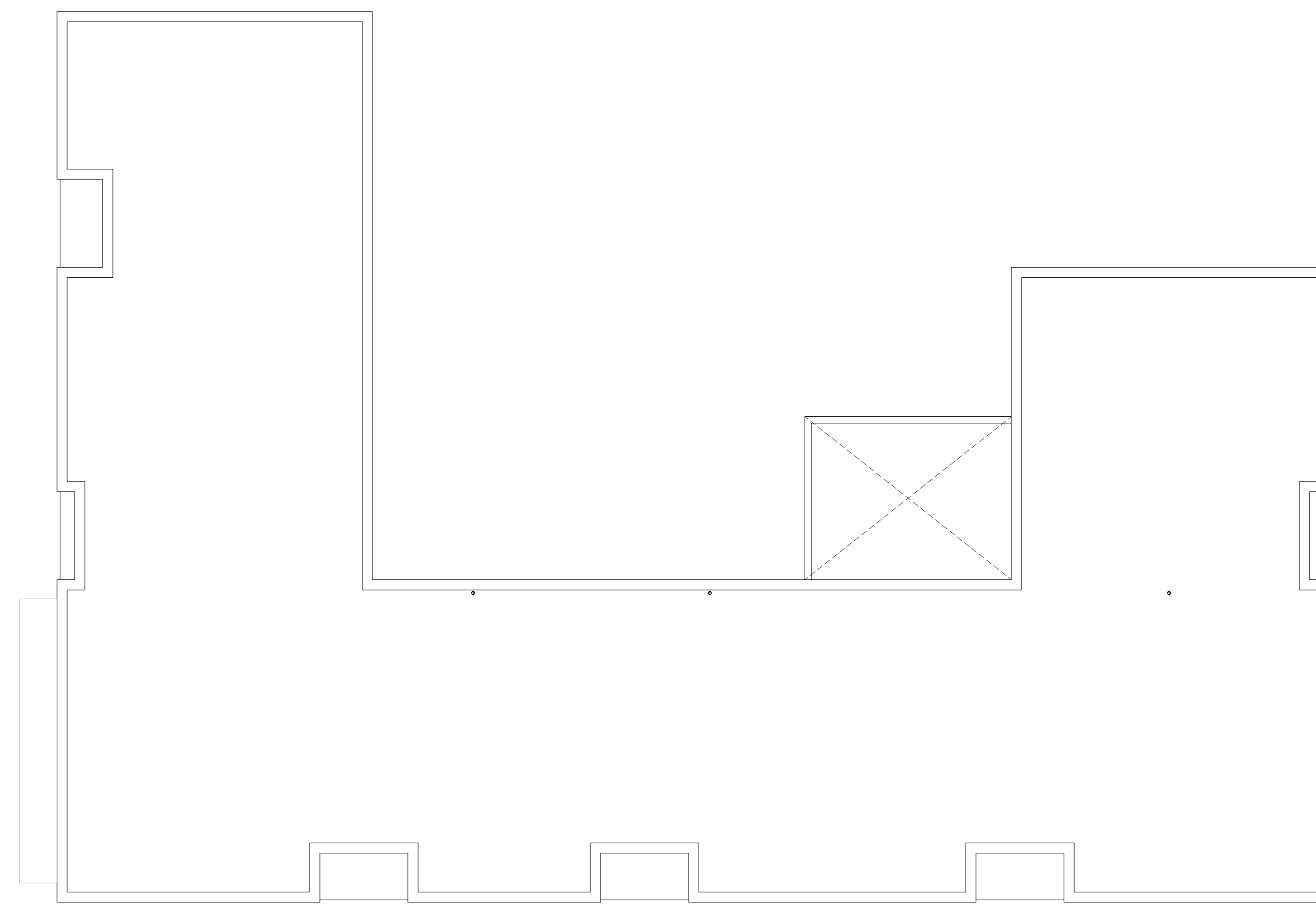
Ground Floor Plan



First Floor Plan



Second Floor Plan



Roof Plan

SCALE BAR 1:100

0 5 10

Rev	Date	Amendment	Initials
F	24-07-2019	BALCONY ADDED TO 1ST & 2ND FLOOR	CS
G	16-08-2019	1300L BIN REMOVED FROM RETAIL REFUSE AREA	RFT
E	23-07-2019	PLANT ACCESS REVISED	RFT
D	16-08-2019	PLAN FUND SPINLED TO BIN COMMENTS	RFT
C	08-06-2019	PUBLIC ENTRANCE TO RUC RE-LOCATED	RFT
B	24-04-2019	REVISED TO MCC SPECIFICATION	RFT
A	28-03-2019	ISSUED FOR PLANNING	RFT

Project: MATTHEWS GREEN, WOKINGHAM
 PHASE 4f
 Client: BOVIS HOMES (SOUTHERN COUNTIES)
 Drawing: LOCAL CENTRE (RETAIL & RESIDENTIAL)
 PROPOSED FLOOR PLANS
 Drawing no: 18-1256-HT-LC-500
 Date: FEB 2019
 Drawn: RFT
 Checked: YC
 Scale: 1:100 / AS NOTED

FINC
 ARCHITECTS & DESIGNERS

FINC Architects Ltd
 01 Non-Compete Clause
 Chartered
 2016
 T 044 (0)243 93388
 www.fincarchitects.com

PLANNING

All dimensions and measurements to be checked on site.
 © FINC Architects Limited holds the copyright in the information contained within this document and First written consent must be obtained before copying or using the data other than for the project for which it was originally supplied.
 Do not scale from this drawing.

This page is intentionally left blank