

LOCALITIES PLUS

TERMS OF REFERENCE

1.1 Purpose

The purpose of the Localities Plus group is to ensure connectivity between the 3 Conversations mode, 21st Century Council and the NHS Long Term Plan and to support and co-ordinate the transition to the three localities. Through this connectivity, the Localities Plus group will design and implement the creation of the three Wokingham Borough localities of North, East and West through the Localities Plus project.

1.2 Aims and Objectives

To take a place-based approach in the Wokingham Borough which will aim to address issues at a neighbourhood level which will enable more personalised and proactive care. Alignment of the three elements of work is imperative to deliver the following objectives of the NHS Long Term Plan and create healthy and resilient communities:

- Boost out of hospital care
- Reducing pressure on emergency hospital services
- Increased personalised care
- Digitally enabled primary and outpatient care
- Focus on population health management

The work streams for Localities Plus are the following:

- Resource connectivity
- Intelligence gathering and sharing
- Alignment with work programmes

The work streams will evolve and cascade down as the project develops and will allow for robust progression and connectivity.

The desired outcome is to enable the residents of Wokingham Borough to maximise quality of life by enabling self-sufficient, healthy and resilient communities.

1.3 Responsibilities

Design and implementation of the three localities of North, East and West in the Wokingham Borough.

1.4 Accountability

The delivery of key milestones as per the overall project plan.

1.5 Membership and Areas Covered

- Deputy Chief Executive (Chair, Corporate Services)
- Assistant Director of Adult Services (Adult Social Care)
- Service Manager Disabled Children and Early Help (Children's Services)
- Assistant Director of Customer and Localities (21st Century Council)
- Head of Service of Wokingham Integrated Social Care & Health Team (3 Conversations Model)
- Assistant Director of Integrated Mental Health (Mental health services)
- Specialist Registrar (Public Health)

LOCALITIES PLUS

TERMS OF REFERENCE

- Better Care Fund Programme Manager (NHS Long Term Plan)

For the governance and stability of Localities Plus, a nominated substitute has been identified for each area.

1.6 Dependencies

The following dependencies will be connected with Localities Plus:

- Wokingham Borough Council Plan
- Adult Social Care business case
- Customer and Localities Service Improvement Plan
- 21st Century Council
- NHS Long Term Plan
- 3 Conversation Model

As the work streams progress, the dependencies for Localities Plus will expand with it.

1.7 Conduct of Business

1.62 Supplying information to the Wokingham Borough Wellbeing Board

Localities Plus will be a standing item on the Wellbeing Board agenda with the view to merge this item with Strategy into Action once the project is fully underway.

1.8 Review of TOR

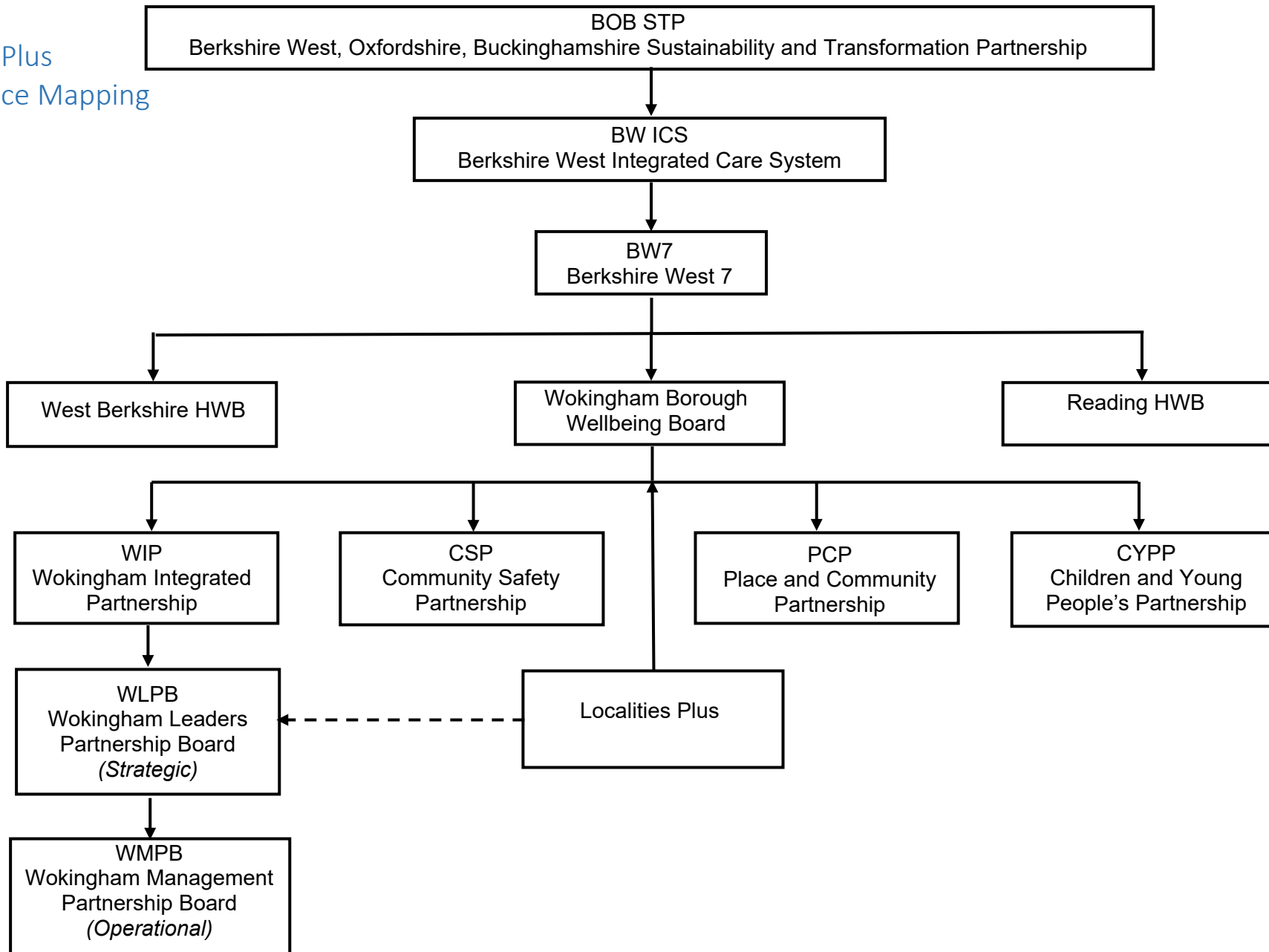
The Terms of Reference is a progressing document and will evolve as the Localities Plus project does.

LOCALITIES PLUS

TERMS OF REFERENCE

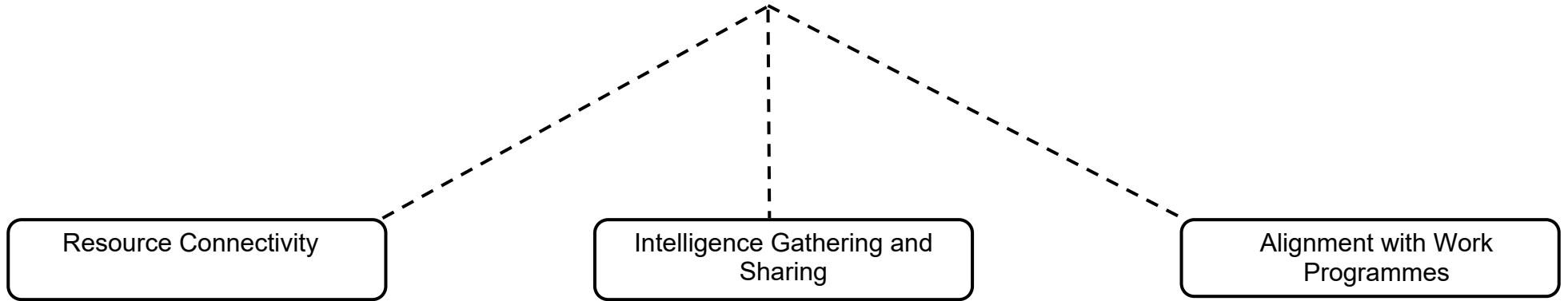
Localities Plus
Governance Mapping

39



**LOCALITIES PLUS
TERMS OF REFERENCE**

Localities Plus Work Streams



LOCALITIES PLUS
TERMS OF REFERENCE

Version Control

No.	Date	Version	Author	Comments
1	27/03/2019	1.0	Charlotte Seymour	Creation of Localities Plus Terms of Reference

This page is intentionally left blank