



21 Century

Overview and Scrutiny

Annex B

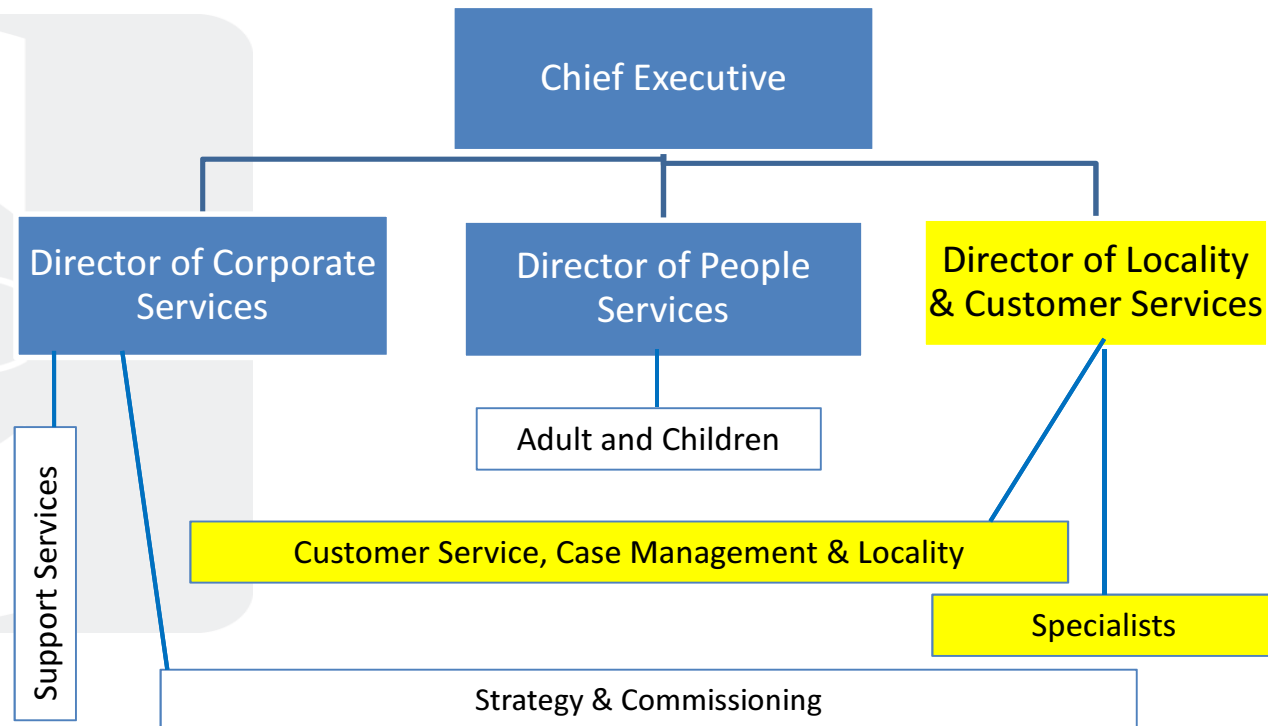


Programme Summary

- Phase 2 of the Programme is due to be delivered in two tranches
- The programme currently is planned to extend until September 2018
- Implementation of Customer and Locality is progressing to plan with the next key milestone being recruitment and appointment
- However due to the issues in People services Implementation of the programme is delayed leading to a potential underachievement of savings

Programme Status remains **Amber** based on timeline and benefits.

Phase 2 August 2017– Sept 2018



19



Staff Affected – Phase 2 Tranche 1

	Phase 2/Tranche 1
At Risk	87
Assimilated	148
Total	235
20	
No change	55
Total Cohort	290



Staff Support

- All staff have had 'shaping your future' training
- Tier 4 managers fully involved in design
- Focused sessions on preparing and briefing the managers
- Consultation Launch
- 121 support
- Change Agents
- Drop in hubs
- Focused sessions on Customer and Locality
- Team meetings
- 300 comments and questions answered

Councillor Engagement ongoing

- Briefings and 121 training sessions
- Regular 121 with Leader and 21C Executive and Deputy Member
- Working group – every 6 weeks
- Locality workshop held 12/12/17 and 25/1/18
- Development of a members intranet
- Sessions with Executive and Deputies directly effected by Customer and Locality
- Regular one page briefings for all Members Third one due before end of March
- Update to group in March
- Ongoing O&S sessions



Phase 2 Tranche 1 consultation comes to an end



Planning



Roadworks



ModernGov



Waste

QUICK LINKS

Outlook Email

Strategic Development

Report it

Press releases

NEWS 23

Categories



Paying the Living Wage is key to improving social mobility
23rd Oct 2016



Success for KPMG's Restructuring team at 2017 TRI Awards
23rd Oct 2016

KPMG comments on UK labour market figures
KPMG comments on UK labour market figures
23rd Oct 2016



Sed Ille Ut Dixi Vitiose
10th Jan 2016

CONTACTS

Search...



Home - Members contact list

wbcflexneondemo.sharepoint.com/sites/members/Lists/.../AllIt

Governance

wbcflexneondemo.sharepoint.com/sites/members/.../DispForm

People Commissioning

wbcflexneondemo.sharepoint.com/sites/members/.../DispForm

Education

wbcflexneondemo.sharepoint.com/sites/members/.../DispForm

Customer and Locality

wbcflexneondemo.sharepoint.com/sites/members/.../DispForm

DOCUMENT FINDER

Enter search term...

All Documents

No documents have been found

Address or App Ref



Layer List



Operational layers



- Current Planning Applications
- Post 1998 Planning Applications
- Pre 1998 Planning Applications
- Ward Boundary
- Parish Boundary

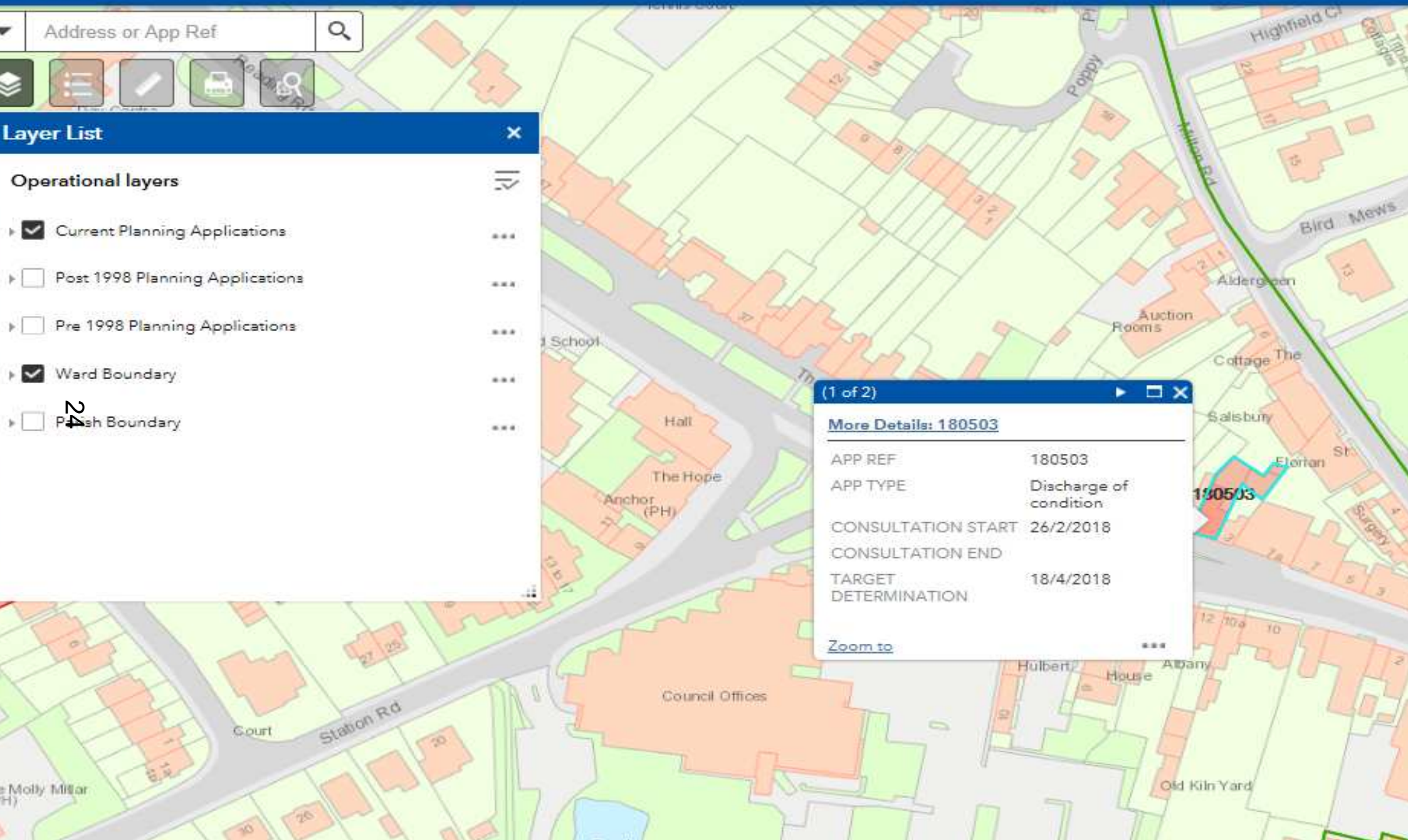


(1 of 2)

More Details: 180503

APP REF	180503
APP TYPE	Discharge of condition
CONSULTATION START	26/2/2018
CONSULTATION END	
TARGET DETERMINATION	18/4/2018

[Zoom to](#)



21st Century Council – Locality Principles

Resilient and flexible workforce to meet the ever changing needs of our customers and physical environment

Work based around data driven geographical patches

Increased visibility - profile, perception and building on our reputation

Localities Officers will have an element of specialism

Managing demand - facilitating proactive customer enabling and preventative campaigns in local areas

A focus on building community capacity

Intelligence & contribution to shaping services - Able to build a more detailed knowledge of a local area or issues on the ground, leading to better commissioning of services

Close local working with members



Filter by type, location or ID

+ Assignments

Due▼ Priority▼ Assignee▼ Sort▼

Assignments

Cleaner & Greener Inspection

51.420364 -0.883633

High | 2 months ago



Public Rights of Way

51.441084 -0.865614

Low | 1 month ago



Planning Application Site Notice

51.421053 -0.838314

Medium | 2 months ago



Planning Application Site Notice

51.414165 -0.841473

Medium | 1 month ago



Planning Application Site Notice

51.413317 -0.837474

High | 2 months ago



Tree Inspection

Assignments

Workers

Worker

Alex Shiell
51.429557 -0.835048

Workload
6 Assignments

Status
Working • 2 months ago

Job Title
Public Rights of Way

Notes
Alex is skilled in Public Rights of Way.

Ordnance Survey data © Crown copyright and database right 2018. OS 10003099

26