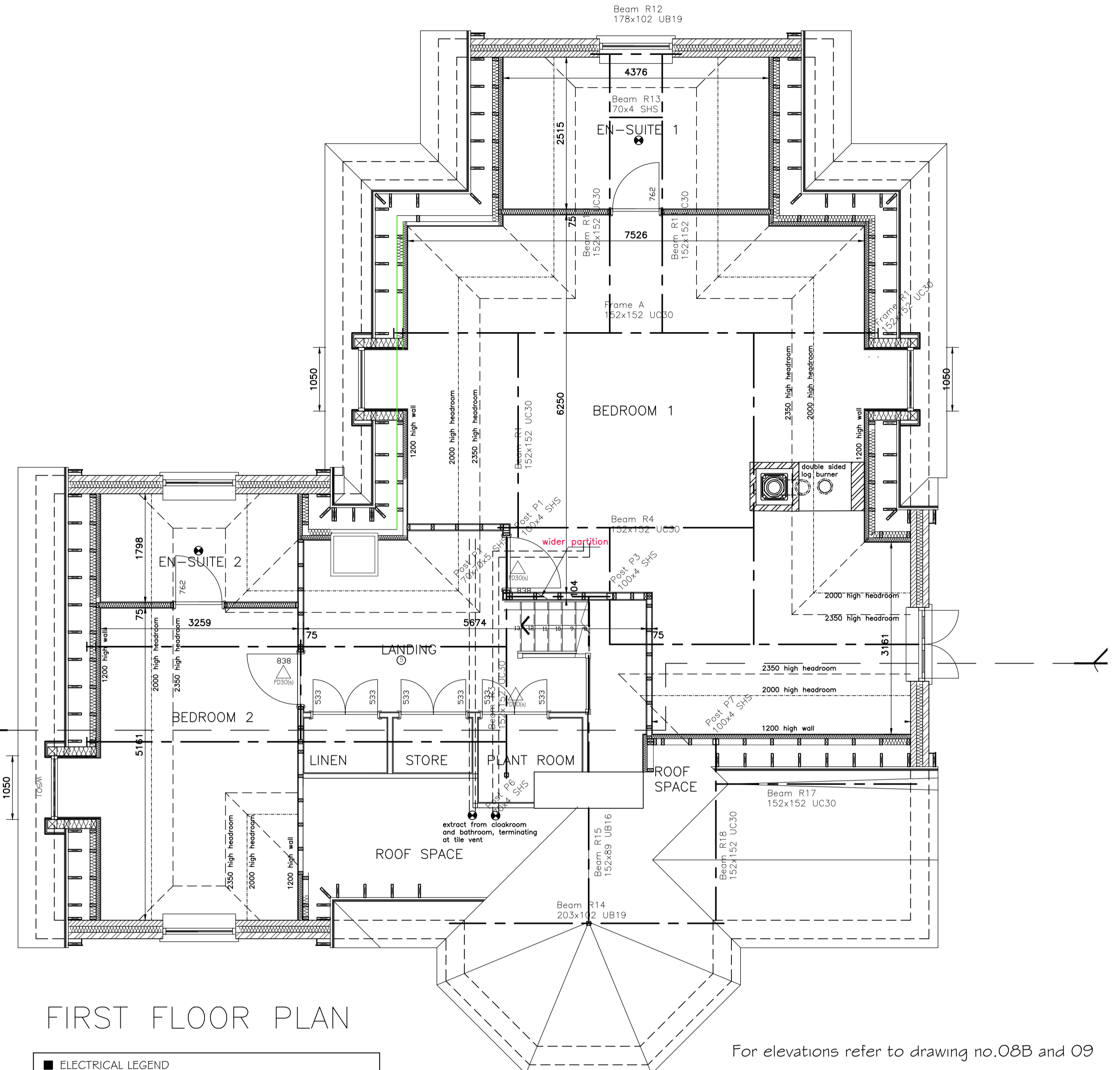


GROUND FLOOR PLAN

FD20 + FD30 FIRE RESISTING DOOR SETS WITH A SELF CLOSING LEAF HUNG ON 3 No. BUTTS. DOORS WITH A (S) SUFFIX HAVE A SMOKE SEAL



FIRST FLOOR PLAN

**ELECTRICAL LEGEND**

FOR POSITION OF ELECTRICS IN KITCHEN INCLUDING FITTINGS REFER TO SPECIALIST ELECTRICAL SUB-CONTRACTORS DETAILS.

FOR POSITION OF INCOMING SERVICES REFER TO SUB-STRUCTURE DRAWINGS & CIVIL ENGINEER'S DRAWINGS.

1.3 AMP SWITCHED SOCKET OUTLET	TELEPHONE POINT 500mm ABOVE FFL
1.3 AMP DOUBLE SWITCHED SOCKET OUTLET	TV AERIAL SOCKET 500mm ABOVE FFL
2 AMP TABLE LAMP CIRCUIT POINTS	DATA POINT
500 ABOVE WORKTOP LEVEL	SATELLITE POINT
SWITCHED SINGLE SOCKET CONTROLLED BY ACP BELOW WORKTOP, EXCEPT FAN SOCKETS TO BE AT HIGH LEVEL	CONDENSER UNIT WITH 24v SPARE FUSEWAYS
FUSED SWITCHES SPIRE	SMOKE DETECTOR - SELF CONTAINED, MANGO FEED INTERCONNECTED
HIGH LEVEL SWITCHED FUSED SPIRE WITH NEON INDICATOR	HEAT DETECTOR
FUSED SPIRE	CARBON MONOXIDE DETECTOR/ALARM
1.3 A BLANKED OUTLET FOR SHAVER POINT	BOLDER PROGRAMMER
FUSED SWITCHED SPIRE WITH FPLD (FW 15A)	THERMOSTAT
CENTRAL FUSED MESH 8000 GRID SWITCH	BELL PUSH
CCU - TO CONTROL AGA	DOOR CHIME
LIGHT SWITCH	ENTRY PHONE
20 WATT LIGHT SWITCH	ALARM CONTROL PANEL - wiring only
FULL COLO LIGHT SWITCH	ALARM BELL SOUNDER
PUSH BUTTON LIGHT SWITCH 1.00 ABOVE FFL	EXTERNAL ALARM BELL BOX
SWITCH WITH INDICATOR FOR LOFT LIGHT	ALARM DOOR CONTACT
RECESSED LED DOWNLIGHTS (IP4 waterproof rated in BATHROOMS, EN-SUITE & SMOKE ROOMS)	ALARM KEYPAD
LOW ENERGY PENDANT FITTING	ELECTRICITY METERS AT HIGH LEVEL ON BOARD
LOW ENERGY BATTERY LIGHT FITTING	ELECTRICITY METERS EXTERNAL BOX
LOW ENERGY BATTERY LIGHT FITTING PIPED OVER COOKER	GAS METERS EXTERNAL BOX
LOW ENERGY VAPOUR PROOF EXTERNAL LIGHT WITH FLE AND DOWN TO SOCK OUT	GAS POINT
LOW ENERGY FLUSH WALL MOUNTED LIGHT FITTING	EXTERNAL COLD WATER TAP
FLUORESCENT STRIPLIGHT	HOLDER
RELAY LIGHT	MECHANICAL VENT
WIRING ONLY i.e. OUTSIDE REAR LIGHT FITTING	3kW IMMERSION HEATER
COOKER CONTROL UNIT WITH 550 (32amp)	ENERGY DISPLAY DEVICE
1.3 A BLANKED OUTLET FOR SHAVER POINT FITTED AS CUSTOMER DITRA	ROTARY SINGLE PHASE ISOLATOR LOCATED AT HIGH LEVEL
	DIT SIGN WITH EMERGENCY BACK UP FUSE
	FRIG. LAURE BREVA GLASS GULL POINT
	SMOKE DETECTOR AND SOUNDER

Switches and socket outlet positions to comply with Part M of the Building Regulations.  
To be set between 400mm and 1200mm above finished floor level (except switches TV and DT points).  
Radiator controls to be set at a common height of between 450 and 600mm above finished floor level.  
Door handles, switches, thermostats, alarm bells to be set at a common height of between 900 and 1200 above finished floor level (not window openings).  
Consumer units to be set between 1300 and 1450 above FFL.

For elevations refer to drawing no.08B and 09

Rev D: Amendments to ground floor  
Rev C: Family room open fire, and Bedroom 1 fire relocated  
Rev B: General updates added  
Rev A: Structural Engineers information added, staircase/dormers repositioned

Project  
**The Lodge  
North Court  
The Ridge  
Finchampstead**

Client  
**Rebecca Stead**

Drawing  
**General Arrangement  
Ground & First Floor Plans**

Scale **1: 50@A1** Date **June 2016**

**The Edwards Irish Partnership LLP  
Architects & Surveyors**  
Suite 8, Market House, 19-21 Market Place, Wokingham, Berks. RG40 1AP  
Tel: 0118-989-4403 Fax: 0118-989-4383  
E-mail: email@edwardsirish.com

Job **2323** Dwg. **20D**

This page is intentionally left blank