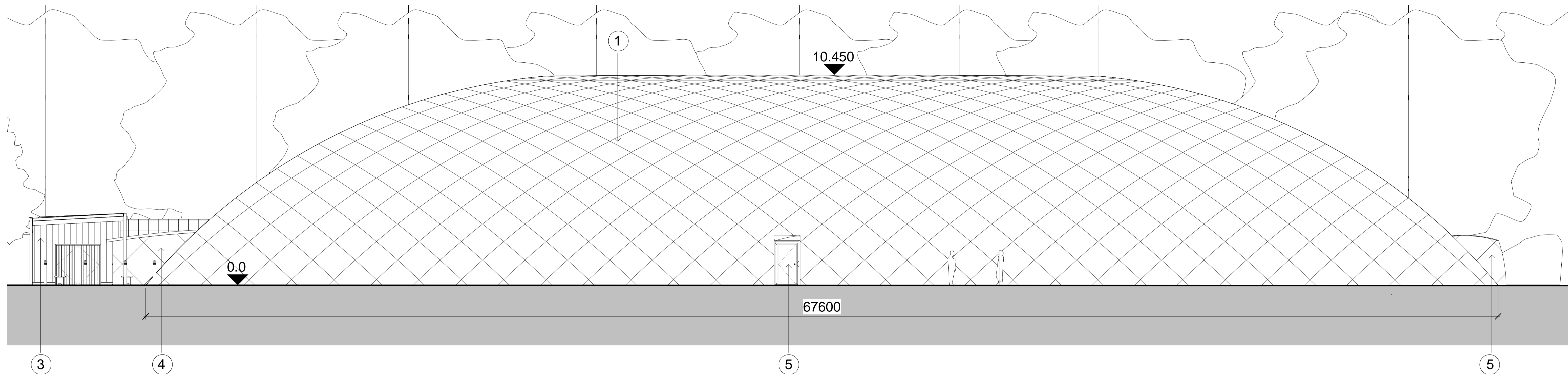


DRAWING TO BE READ IN CONJUNCTION WITH 26346
 RG-L-04 Rev A GA Plan LANDSCAPE MASTERPLAN

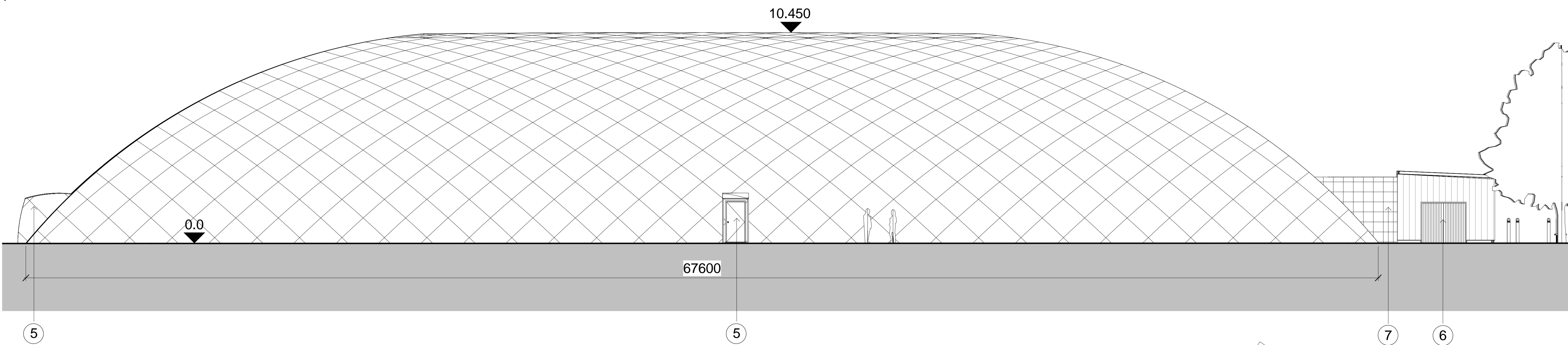
All plant shown within the proposed compound is illustrative
 only and subject to engineers design.

CableDome based on information provided by manufacturer



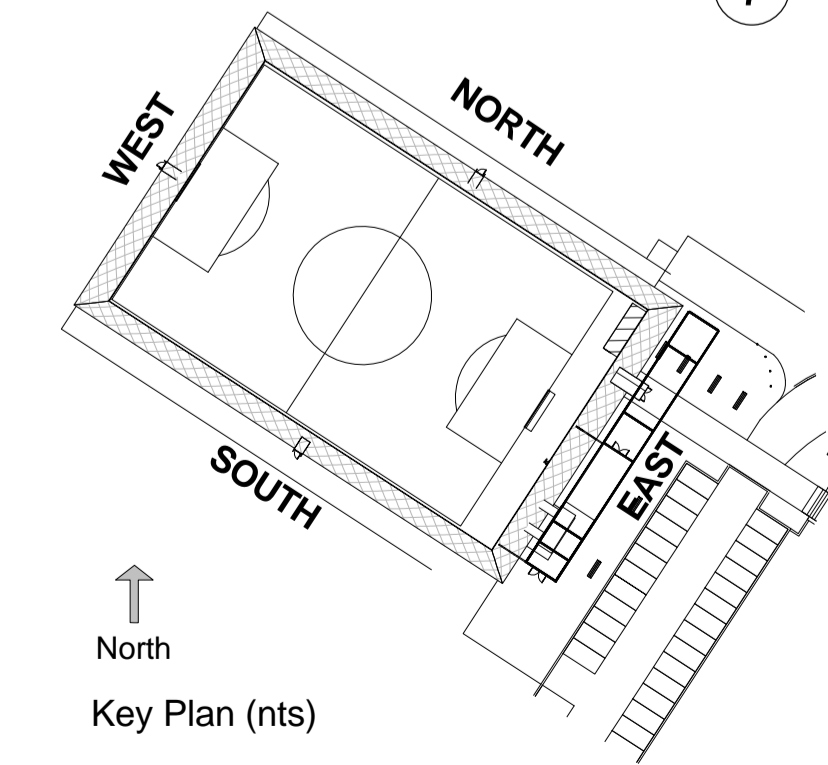
North Elevation
 1 : 100

57



South Elevation
 1 : 100

1. PVC Membrane with steel cable over dome
2. Pergola formed with steel columns and beams. Sizes shown are illustrative only and subject to Structural Engineers design.
3. Proposed Equipment store; corrugated metal cladding with graphics over
4. Proposed entrance airlock with steel inner and outer double doors
5. Emergency exit door (steel)
6. Plant compound with corrugated metal perimeter fencing with door access
7. Mesh fence to closed off gap



0m 2m 4m 6m 8m 10m
 VISUAL SCALE 1:100 @ A1
 C:\Users\ryan.o'reilly\Documents\24309-Forest School Planning_ryan.o'reilly.rvt

Planning
 Project
 Land at Forest School
 Reading Football Club
 Drawing Title
 Proposed North/South Elevations

Date	Scale	Drawn by	Check by
20/09/16	As indicated @ A1	ROR	MB
Project No	Drawing No	Revision	
26346	A-P-P12-02	A	

BARTON WILLMORE
 Planning • Master Planning & Urban Design
 Architecture • Landscape Planning & Design • Project Services
 Environmental & Sustainability Assessment • Graphic Design
 bartonwillmore.co.uk

This page is intentionally left blank