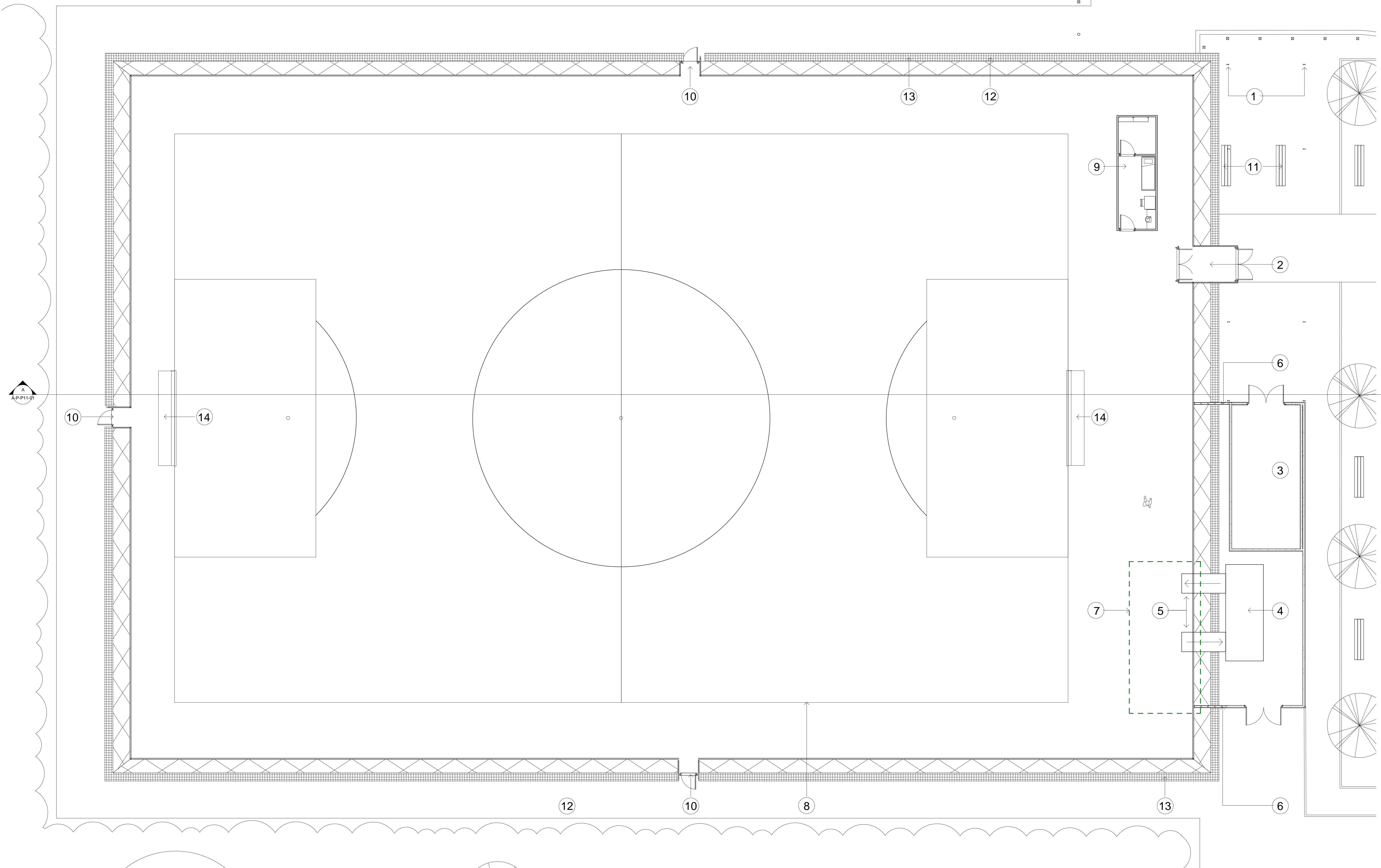
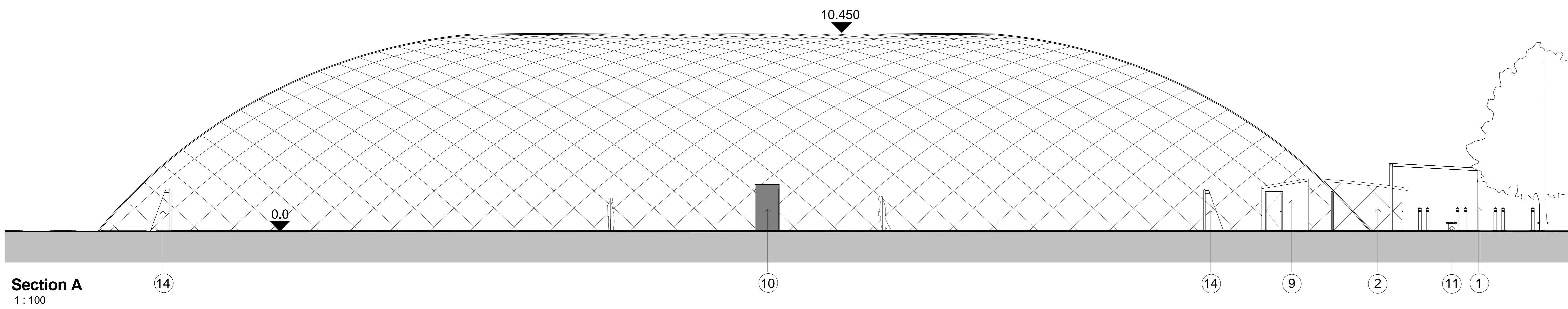


DRAWING TO BE READ IN CONJUNCTION WITH 26346
 RG-L-04 Rev A GA Plan LANDSCAPE MASTERPLAN
 All plant shown within the proposed compound is illustrative only and subject to engineers design.
 CableDome based on information provided by manufacturer

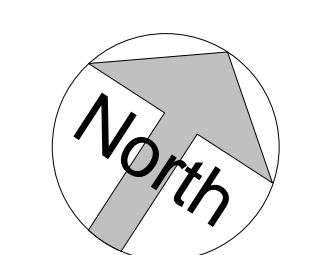


Ground Floor Dome
 1: 100

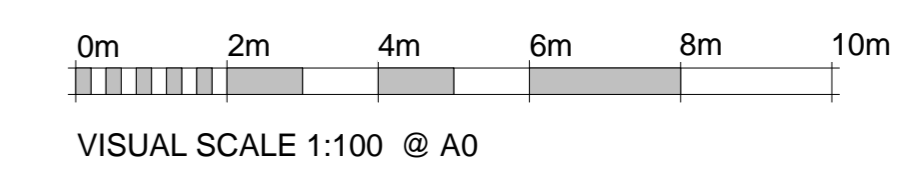
1. Pergola formed with steel columns and beams. Sizes shown are illustrative only and subject to Structural Engineers design.
2. Proposed principle entrance; double 'air lock' doors
3. Equipment store
4. Plant compound inflation plant and back up generator on concrete base
5. Supply and exhaust air ductwork
6. Proposed mesh panels
7. Parents/Guardians area with low level barrier to perimeter (illustrative only)
8. Pitch markings
9. Proposed medical room and store facility (illustrative only)
10. Proposed emergency exits
11. Proposed external seating
12. Proposed grasscrete perimeter path for maintenance access
13. Perimeter pea shingle drainage channel
14. Goal Posts



Section A
 1: 100



Planning
 Project
 Land at Forest School
 Reading Football Club
 Drawing Title
 Proposed Ground
 Floor Plan
 Date 20/09/16 Scale 1: 100 @ A0 Drawn by ROR Check by MB
 Project No 26346 Drawing No A-P-P11-01 Revision A



BARTON WILLMORE
 Planning • Master Planning & Urban Design
 Architecture • Landscape Planning & Design • Project Services
 Environmental & Sustainability Assessment • Graphic Design
 bartonwillmore.co.uk

This page is intentionally left blank