

Support for carers

Marlena O'Donnell

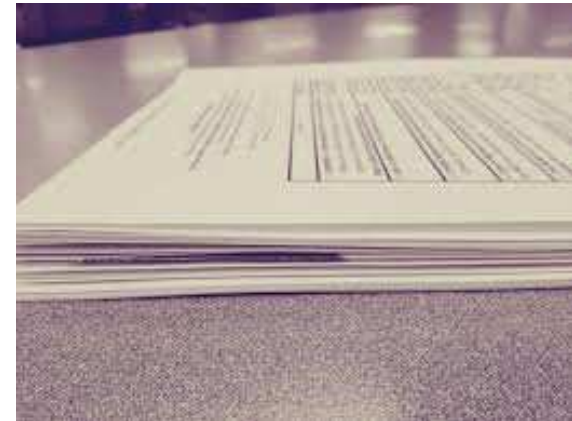
Policy and Strategy Manager, Adult Social Care



WOKINGHAM
BOROUGH COUNCIL

Commitment to supporting carers

- Care Act 2014
- Children and Families Act 2014
- National Carers Strategy and Action Plan 2014-2016
- NHS England's Commitment to Carers 2014
- Wokingham Borough Council's vision
- Adult Social Care Vision 2015
- Wokingham Borough Council's Carers Strategy 2016-2018



Carers Strategy 2016-2018

- Main priorities:

- Supporting carers
- Enabling carers to keep healthy
- Addressing social isolation
- Supporting carers to self-help and empowerment
- Promoting community based approaches to support



Our carers

- Wokingham Borough Council actively supports around 700 carers through statutory services
- There are many more carers supported by local voluntary sector organisations – WBC directly commissions over 20 support services for carers

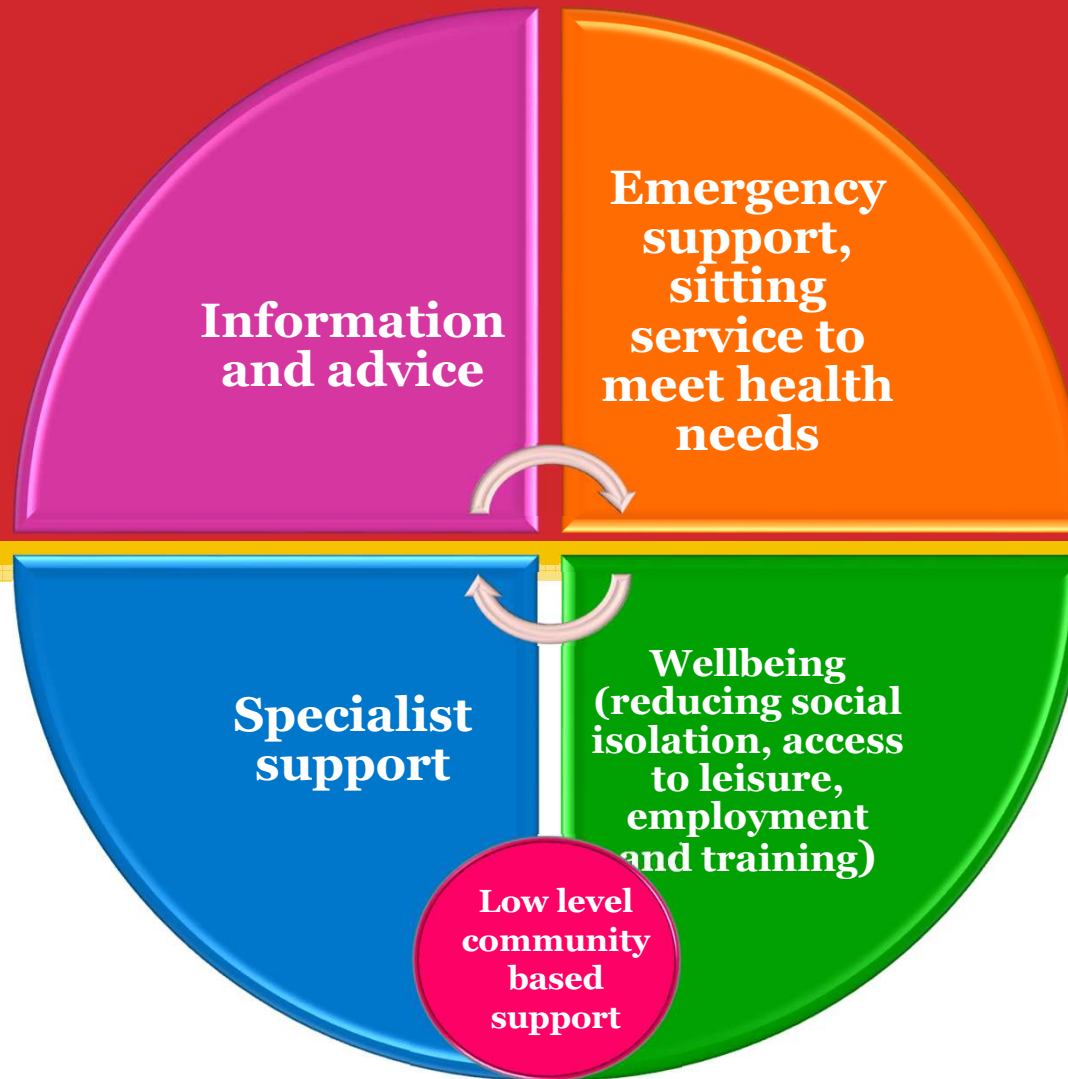


Carers views count!



- Consultation regarding future carers services →
 - New model of carers support services
 - Review of carers support services
 - Carers Strategy 2016-2018
- Consultation regarding advice and information and outreach service →
 - Service specification for the new service informed by the local carers

New Carers Support Services Model



Support for carers

- New carer's assessment and transition process for young carers
- Training for all assessors and brokers on how to best support carers
- Free services for carers
- WIN/social care hub
- Range of statutory and non-statutory services (some delivered in partnership with other local authorities/CCGs)



New services

- Young Carers Service (starts in July)
- Advocacy (starts in July)
- Carers club (for carers of people with dementia) – starts in July
- Carers UK Digital Offer – live now



Information and advice for carers

- WIN / hub
- Carers groups and forums (currently supported by Involve)
- Community Navigators
- Carers events
- Local carers organisations
- New information and advice service for carers is being currently commissioned



This page is intentionally left blank